

# ONLINE TRAINING & PERFORMANCE SOLUTIONS





## IMPROVE PERFORMANCE. STRENGTHEN COMPLIANCE. REDUCE RISK.

RedVector sets the standard for excellence in online continuing education, training and performance support for the design, construction and facility management industries, helping organizations improve productivity and reduce costs. Through our award-winning Learning Management System (LMS), we offer large-scale corporate training solutions including engaging courses and a full range of tracking and reporting features.

With an online library of approximately 4,000 courses authored by more than 200 subject matter experts and accredited by 100 national and state bodies, RedVector helps thousands of firms in all 50 states train and develop their employees and increase the bottom line.

### REDVECTOR TRAINING SOLUTIONS

RedVector has the most dynamic, up-to-date online course library for professionals working in the design and construction industry, including architects, engineers, contractors, land surveyors, landscape architects, interior designers, building inspectors and facility managers.



Our courses provide a surefire way for your staff to meet continuing education requirements for a wide variety of licenses and certifications. Nearly all of the training courses within RedVector's libraries have been awarded approvals and accreditations from state and national boards, professional associations and other accrediting organizations.

Courses offered by RedVector have been reviewed to meet technical requirements of the Board of Certified Safety Professionals (BCSP) for the following certifications: CSP, ASP, OHST, CHST, CET.

Our quality online education courses are accessible from desktop computers, and are now accessible via tablet and mobile devices, making them well-suited for your professionals with busy and billable schedules.



# TRAINING TOPICS

## Architecture

- Accessibility/ADA
- Bath Planning
- BIM
- Building for Senior Living
- Building Systems for Designers
- Codes & Standards
- Cost Management
- Design-Build
- Energy Efficiency
- Historic Preservation
- Interior Lighting
- Space Planning
- Sustainable Design

## AutoDesk\*

- AutoCAD
- 3ds Max
- Advance Steel
- BIM 360
- Civil 3D
- Configurator 360
- Dynamo
- FormIt 360
- Fusion 360
- Hydraflow Extensions
- Inroads
- Insight 360
- Inventor
- Maya
- Mockup 360
- MotionBuilder
- Mudbox
- Navisworks
- ReCap
- Revit
- Showcase
- SketchBook
- Storm and Sanitary Analysis
- Vault
- Vehicle Tracking
- VRED Professional

## Civil Engineering

*Construction, Structural, Environmental, Geotechnical, Transportation, Water Resources*

- BIM
- Codes & Standards
- Concrete, Wood, Steel
- Design Build
- Energy Efficiency
- Engineering Ethics
- Environmental
- Geotechnology
- Highways, Streets, Traffic, Parking
- Hurricane Mitigation, Wind Design
- Land Development
- Liquefied Natural Gas
- Sediments, Erosion, Drainage
- Seismic
- Stormwater, Wetlands
- Structural Design
- Wastewater, Hazardous Waste

## Codes & Standards

- American Society of Civil Engineers - ASCE
- American Concrete Institute - ACI
- American Society of Heating, Refrigerating, and Air-Conditioning Engineers - ASHRAE
- Americans with Disabilities Act - ADA
- Florida Advanced Building Code
- International Building Code - IBC
- International Energy Conservation Code - IECC
- International Fire Code - IFC
- International Fuel Gas Code - IFGC
- International Green Construction Code - IgCC
- International Mechanical Code - IMC
- International Plumbing Code - IPC
- International Residential Code - IRC
- National Electrical Code - NEC

## Construction & Trades

*Commercial/Residential Building, Electrical, Plumbing, HVAC*

- Arbitration, Mediation, Claims
- Arc Flash, NFPA 70E
- BIM
- Building Systems
- Codes & Standards
- Concrete
- Design Build
- Documentation
- Energy Efficiency
- Green Building
- HVAC/Refrigeration
- Indoor Air Quality
- Land Development
- Mold Remediation
- NEC
- Roofing Systems
- Wind Mitigation

## Electrical Engineering

- Engineering Ethics
- Alternative Energy
- Arc Flash, NFPA 70E
- Codes & Standards
- Data Centers
- Electric Motors
- Energy Efficiency
- Lighting
- Microgrids
- NEC
- Power Generation & Distribution
- Solar/Photovoltaics
- Transformers

## Green/Sustainable/LEED

- Alternative/Renewable Energy
- Codes & Standards
- Energy Efficiency
- Fitwel
- Flooding, Water Pollution
- Green Design/Building
- Green Globes
- ISI Envision Rating System
- LEED v4 Building Design & Construction - BD&C
- LEED v4 Homes

- LEED v4 Interior Design & Construction - ID&C
- LEED v4 Neighborhood Design - ND
- LEED v4 Operations & Maintenance - O&M
- Sustainable Trends
- WELL AP

## Health, Safety & Environment

- CPR/First Aid
- Bloodborne Pathogens
- Confined Space
- Crane/Forklift Safety
- Driving Safety
- Electrical Safety, Arc Flash, NFPA 70E
- Ergonomics/Back Safety
- Fall Protection
- Fire/Emergency
- Hazardous Materials/ Communication
- HAZWOPER 24 & 40
- HAZWOPER 8 hr. Refresher
- Ladders/Scaffolds
- Mold, Lead, Asbestos
- MSHA
- Office Safety
- OSHA 10 Hour Construction
- OSHA 10 Hour General Industry
- OSHA 30 Hour Construction
- Personal Protective Equipment
- Respiratory Protection

## Home/Building Inspection

- Accessibility/ADA
- Codes & Standards
- Florida Advanced Building Code
- Report Writing

## Interior Design

- Accessibility/ADA
- BIM
- Building Systems for Designers
- Codes & Standards
- Drawing Shortcuts
- Furniture Design
- Green Design
- Interior Lighting
- Space Planning

## Land Surveying

- Boundary Disputes
- Court Decisions
- Easements
- Ethics for Land Surveyors
- Metes & Bounds

## Landscape Architecture

- Accessibility/ADA
- Codes & Standards
- Green Landscape Design
- Irrigation
- Parking Lot Design
- Regenerative Landscape Design
- Road Alignment
- Site Engineering
- Soils
- Storm Water Management

## Mechanical Engineering

- ASHRAE
- Codes & Standards
- Electric Motors
- Energy Conversion
- Engineering Ethics
- Fuel & Combustion Systems
- HVAC
- Indoor Air Quality
- Mechanical Science
- Pipes & Pumps
- Refrigeration

## Petroleum Engineering

- Engineering Ethics
- Fuel & Combustion Systems
- Liquefied Natural Gas
- Liquid Process Piping
- Natural Gas
- Petroleum Exploration, Recovery, and Transportation
- Petroleum Instrumentation and Measurement

## Professional Development

- Communication, Presentations
- Advanced Project Management Series
- AEC Success Series
- Customer Service
- Cyber Security
- Financial Management
- Health & Wellness
- HR Compliance – Sexual Harassment Prevention, FMLA, Discipline, Hiring, Termination, etc.
- Leadership, Coaching
- Management
- Process Improvement
- Quality Control
- Sales, Business Development
- Violence in the Workplace
- Word, Excel, PowerPoint, Outlook

## Project Management

- Delivery Systems, Design Build
- Budgets
- Communication/Leadership
- Contracts
- CPM Scheduling
- Documentation/Reports
- Microsoft Project
- Planning/Scheduling
- Quality Control
- Risk Management
- Time Management

\* For more information about our world-class Autodesk software training offering, please contact us at (866) 546-1212.



	Architecture & Design	Construction Project Management	Construction & Trade	Cybersecurity Awareness	EIT Success	Engineering	Facilities Management & Maintenance	Health, Safety, Environment Premium	IT & Security	Professional Development	Project Management	Workplace Essentials
10 Apps in 10 Weeks												
2008 NEC Changes Part 1 Introduction	•		•			•			•			
2008 NEC Changes Part 2 Wiring Design and Protection	•		•			•						
2008 NEC Changes Part 3 Wiring Methods and Material	•		•			•						
2008 NEC Changes Part 4 Equipment for General Use	•		•			•						
2008 NEC Changes Part 5 Special Occupancies	•		•			•						
2008 NEC Changes Part 6 Special Equipment	•		•			•						
2008 NEC Code Changes 15-Hour Review	•		•			•						
2008 NEC Code Changes: Article 100 - Article 210, Installation & Branch Circuits	•		•			•						
2008 NEC Code Changes: Article 110 - Article 355, Electrical Installations, Feeders, Cables & More	•		•			•						
2008 NEC Code Changes: Article 215 - Article 250, Overcurrent Protection & Grounding	•		•			•						
2008 NEC Code Changes: Article 300 - Article 410, Conductors, Receptacles & More	•		•			•						
2008 NEC Code Changes: Article 392 - Article 800, Cable Trays, Switchboards & More	•		•			•						
2008 NEC Code Changes: Article 626 - Article 708, Truck Parking, Photovoltaics & More	•		•			•						
2008 NEC Code Changes: Part 1	•		•			•						
2008 NEC Code Changes: Part 2	•		•			•						
2008 NEC Grounding	•		•			•						
2008 NEC Motor Circuits & OSHA Electrical Safety	•		•			•						
2008 NEC Motor Circuits/Calculations	•		•			•						
2011 NEC Code Change Articles 200-280	•		•			•	•					
2011 NEC Code Change Articles 90-110	•		•			•	•					
2011 NEC Code Changes - Chapter 3 & Chapter 4	•		•			•	•					
2011 NEC Code Changes - Chapter 5	•		•			•	•					
2011 NEC Code Changes - Chapter 6, Chapter 7 & Chapter 8	•		•			•	•					
2011 NEC Code Changes - Introduction, Chapter 1 & Chapter 2	•		•			•	•					
2011 NEC Code Changes 15-Hour Review	•		•			•	•					
2012 International Green Construction Code (IgCC) Fundamentals Part 1	•		•		•	•						
2012 International Green Construction Code (IgCC) Fundamentals Part 2	•		•		•	•						
2014 Florida Building Code Advanced 5th Edition: Accessibility Scoping Requirements Internet	•		•			•						
2014 Florida Building Code Advanced 5th Edition: Accessibility, Application and Administration Internet	•		•			•						
2014 Florida Building Code Advanced 5th Edition: Energy Conservation - Internet	•		•			•	•					
2014 Florida Building Code Advanced 5th Edition: Irrigation Summary of Provisions - Internet	•		•									
2014 Florida Building Code Advanced 5th Edition: Mechanical Summary of Significant Changes - Internet	•		•			•	•					
2014 Florida Building Code Advanced 5th Edition: Plumbing Summary of Significant Changes - Internet	•		•				•					
2014 Florida Building Code Advanced 5th Edition: Significant Changes to the Residential Code - Internet	•		•			•						
2014 Florida Building Code Advanced 5th Edition: Structural Summary of Provisions - Internet	•		•									
2014 Florida Building Code® Advanced 5th Edition: Significant Changes to the Building Code - Internet	•		•			•						
2014 Florida Residential Code Advanced 5th Edition: Overview - Internet	•		•									
2015 International Building Code Essentials - Code Administration, Enforcement, and Building Planning	•		•		•	•	•					
2015 International Building Code Essentials - Fire Safety	•		•		•	•	•					
2015 International Building Code Essentials - Health Safety	•		•		•	•	•					
2015 International Building Code Essentials - Life Safety	•		•		•	•	•					
2015 International Building Code Essentials - Structural Safety	•		•		•	•	•					
2015 International Building Code: Significant Changes to Structural Provisions	•		•		•	•						
2015 International Energy Conservation Code - Commercial Essentials	•		•		•							
2015 International Energy Conservation Code - Residential Essentials	•		•		•							
2015 International Fire Code Essentials - General Safety Precautions	•		•		•	•	•	•				
2015 International Fire Code Essentials - Hazardous Materials	•		•		•	•	•	•				
2015 International Fire Code Essentials - Site and Building Services	•		•		•	•	•	•				
2015 International Fire Code Essentials - Special Processes and Building Uses	•		•		•	•	•	•				
2015 International Fire Code® Essentials - Fire/Life Safety Systems and Features	•		•		•	•	•	•				
2015 International Fire Code®: Significant Changes	•		•		•	•	•	•				
2015 International Plumbing, Mechanical, and Fuel Gas Code: Significant Changes	•		•		•	•	•					
2015 International Residential Code® Essentials - Code Administration and Site Development	•		•		•							
2015 International Residential Code® Essentials - Health and Safety	•		•		•							
2015 International Residential Code® Essentials - Protection, Utilities, Conservation, and Hazards	•		•		•							
2015 International Residential Code® Essentials - Structural	•		•		•							
2015 National Design Specification for Wood Construction	•		•		•							
2017 Florida Building Code Advanced 6th Edition: Accessibility Scoping Requirements Internet	•		•		•							
2017 Florida Building Code Advanced 6th Edition: Accessibility, Application and Administration	•		•		•							
2017 Florida Building Code Advanced 6th Edition: Summary of Structural Provisions - Internet	•		•		•							
2017 NEC Changes: A New Process and Five New Articles	•		•			•	•					
2017 NEC Changes: Appliances and Equipment	•		•			•	•					
2017 NEC Changes: Branch Circuit, Feeder and Services	•		•			•	•					
2017 NEC Changes: Communications Systems	•		•			•	•					
2017 NEC Changes: Conductors and Wiring Methods	•		•			•	•					
2017 NEC Changes: Enclosures and Boxes	•		•			•	•					



	Architecture & Design	Construction Project Management	Construction & Trade	Cybersecurity Awareness	EIT Success	Engineering	Facilities Management & Maintenance	Health, Safety, Environment Premium	IT & Security	Professional Development	Project Management	Workplace Essentials
2017 NEC Changes: General Requirements	•		•			•	•					
2017 NEC Changes: Hazardous Locations						•	•					
2017 NEC Changes: Overcurrent Protection and Grounding & Bonding						•	•					
2017 NEC Changes: Receptacles and Switches						•	•					
2017 NEC Changes: Special Equipment	•		•			•	•					
2017 NEC Changes: Special Occupancies						•	•					
3D Fundamentals with IOS									•			
3D Printing in Design and Construction	•	•										
3-way Communication										•		
A Better Construction Contract		•		•								
A Hydrology Primer for Engineers and Design Professionals	•			•	•							
A Leaders Guide to Decision Making									•			
A Manager's Guide to Performance Appraisals		•							•	•	•	
A Wetland Primer for Design Professionals	•			•	•							
A Wetland Primer, Advanced: Field Evaluation & Permitting Considerations	•				•							
A/E's, Owners, & Contractors: Managing Projects to Success		•								•		
A+ 2016: Mobile Devices-Introduction to Mobile Devices									•			
A+ 2016: Mobile Devices-Laptop Features									•			
A+ 2016: Mobile Devices-Laptop Setup and Troubleshooting									•			
A+ 2016: Mobile Devices-Mobile Operating Systems									•			
A+ 2016: Mobile Devices-Troubleshooting Mobile Devices									•			
A+ 2016: Networking-Internet Connections and Routers									•			
A+ 2016: Networking-Network Devices									•			
A+ 2016: Networking-Network Protocols									•			
A+ 2016: Networking-Network Wi-Fi									•			
A+ 2016: Networking-Networking Cables, Connectors, and Tools									•			
A+ 2016: Operating Systems-Cloud Computing and Virtualization									•			
A+ 2016: Operating Systems-Installing and Patching Windows OS									•			
A+ 2016: Operating Systems-Overview of Mac OS and Linux OS									•			
A+ 2016: Operating Systems-Server Roles and Threat Management									•			
A+ 2016: Operating Systems-Troubleshooting PC OS									•			
A+ 2016: Operating Systems-Windows Command-Line Tools									•			
A+ 2016: Operating Systems-Windows Operating Systems									•			
A+ 2016: PC Assembly-Assembly and Setup									•			
A+ 2016: PC Assembly-Computer Components and Organization									•			
A+ 2016: PC Assembly-Device Connections									•			
A+ 2016: PC Assembly-Troubleshooting Motherboard, CPU, and RAM									•			
A+ 2016: PC Assembly-Troubleshooting Storage and RAID									•			
A+ 2016: PC Components-Central Processing Unit									•			
A+ 2016: PC Components-Display Devices									•			
A+ 2016: PC Components-Introduction to Printers									•			
A+ 2016: PC Components-RAM Types and Features									•			
A+ 2016: PC Components-Storage Devices									•			
A+ 2016: Security and Operations-IT Operations									•			
A+ 2016: Security and Operations-Mobile Security									•			
A+ 2016: Security and Operations-Preventing Security Threats and Vulnerabilities									•			
A+ 2016: Security and Operations-Safety Controls and Practices									•			
A+ 2016: Security and Operations-Windows OS Security									•			
A+ 2016: Test Me-CompTIA Exam A+ 220-901 & 220-902									•			
Aboveground Storage Tank Requirements (AST)								•				
Aboveground Storage Tanks, Part 1							•					
Aboveground Storage Tanks, Part 2							•					
Absolute Mechanical Basics: Measures, Mass & Motion						•						
AC Fundamentals Review							•					
AC Generator Basics							•					
AC Generator Maintenance							•					
AC Motor Basics							•					
AC Motor Controller Maintenance, Part 1							•					
AC Motor Controller Maintenance, Part 2							•					
Access 2013: 01-Working with Databases in Access 2013									•			
Access 2013: 02-Creating, Modifying, and Managing Tables in Access 2013									•			
Access 2013: 03-Working with Forms in Access 2013									•			
Access 2013: 04-Working with Queries in Access 2013									•			
Access 2013: 05-Sharing and Protecting Your Data in Access 2013									•			
Access Management	•	•				•						
Accessibility and Visitability	•	•										
Accessibility by Building Type: Multi-Use Facilities	•					•						



	Architecture & Design	Construction Project Management	Construction & Trade	Cybersecurity Awareness	EIT Success	Engineering	Facilities Management & Maintenance	Health, Safety, Environment Premium	IT & Security	Professional Development	Project Management	Workplace Essentials
Accessibility by Building Type: Universal Residential Design	•						•					
Accessible Parking	•											
Accessible Restrooms	•											
Accessible Routes: Getting In, Out, and Around	•		•		•	•	•					
Accessible Signage	•											
Accounting for Change Orders		•										
Active Shooter and Other Acts of Targeted Violence							•	•	•	•		•
Active Shooter Response								•		•		
Active Shooter: Helping Prevent Tragedy - Hospitality							•	•				
ADA Compliance in Business		•							•	•	•	•
ADA Guidelines 2010: Achievable Barrier Removal and Accessibility	•		•		•	•	•					
ADA Guidelines 2010: Building Blocks	•		•		•	•	•					
ADA Guidelines 2010: Communication Elements and Features	•		•		•	•	•					
ADA Guidelines 2010: General Site and Building Elements	•		•		•	•	•					
ADA Guidelines 2010: Plumbing Elements and Facilities	•		•		•	•	•					
ADA Guidelines 2010: Recreational Facilities	•		•		•	•						
ADA Guidelines 2010: Small Towns	•		•		•	•						
ADA Guidelines: Achievable Barrier Removal and Accessibility (B)	•		•			•						
ADA Guidelines: Designing Pedestrian Facilities using Public Right of Way Accessibility Guidelines (PROWAG)	•											
Administering Server 2012 (70-411): 01-Deploying, Maintaining, and Monitoring Servers in Windows Server 2012									•			
Administering Server 2012 (70-411): 02-Configuring Advanced File Services in Windows Server 2012									•			
Administering Server 2012 (70-411): 03-Configuring Network Access and Services in Windows Server 2012									•			
Administering Server 2012 (70-411): 04-Configuring a Network Policy Server Infrastructure in Windows Server 2012									•			
Administering Server 2012 (70-411): 05-Configuring and Managing Active Directory in Windows Server 2012									•			
Administering Server 2012 (70-411): 06-Configuring and Managing Group Policy in Windows Server 2012									•			
Administering Server 2012 (70-411): 07-What's New in Windows Server 2012 R2									•			
Administering Server 2012 (70-411): Show Me-Configuring a Network Policy Server Infrastructure									•			
Administering Server 2012 (70-411): Show Me-Configuring Advanced File Services									•			
Administering Server 2012 (70-411): Show Me-Configuring and Managing Active Directory Solutions									•			
Administering Server 2012 (70-411): Show Me-Configuring and Managing Group Policy									•			
Administering Server 2012 (70-411): Show Me-Configuring Network Access and Services									•			
Administering Server 2012 (70-411): Show Me-Deploying, Maintaining, and Monitoring Servers									•			
Administering Server 2012 (70-411): Test Me-Microsoft Exam 70-411									•			
Adult Learning										•		
Advanced Javascript Development									•			
Advanced Management Skills		•							•	•	•	
Advanced Project Management: Advanced Project Risk Management		•					•					
Advanced Project Management: Advanced Project Scheduling		•					•					
Advanced Project Management: Converting Strategy Into Action		•					•					
Advanced Project Management: Executing Complex Programs		•					•					
Advanced Project Management: Integrated Project Delivery		•					•					
Advanced Project Management: Managing Project Teams		•					•					
Advanced Project Management: Project Management in a Dynamic Environment		•					•					
Advanced Project Management: Project Performance Management		•					•					
Advanced Project Management: Sustainability in Project Management		•					•					
Advanced Project Management: The Power of Project Leadership		•					•					
Advanced Project Management: Understanding the Project, Program, and Portfolio Architecture							•					
Advanced Stormwater Treatment: Design						•						
Advanced Stormwater Treatment: Nutrient Removal						•						
Advanced Wastewater Treatment Plant Design						•						
Advancements in Concrete			•		•							
Adverse Possession: An Advanced Course						•						
AEC Success: 7 Steps for Using LinkedIn® Effectively										•		
AEC Success: Business Development and Sales	•				•		•			•		
AEC Success: Conflict Resolution in the Workplace										•		
AEC Success: Designing Presentation Visual Aids						•				•		
AEC Success: Effective Decision Making	•				•		•			•		
AEC Success: Five Steps to Effective E-mail Management										•		
AEC Success: How to Become a Top-Notch Industry Leader	•				•		•			•		
AEC Success: How to Communicate and Present Effectively	•				•		•			•		
AEC Success: How to Create a Focused, Productive and Low Stress Career and Life										•		
AEC Success: How to Find and/or Become a Mentor										•		
AEC Success: Improving Organization and Productivity						•				•		
AEC Success: Networking and Relationship Building	•				•		•			•		
AEC Success: Obtaining the Right Credentials in Your Career						•				•		
AEC Success: Strategies for a Successful Interview										•		
AEC Success: Time Management and Billable Hours	•				•		•			•		





	Architecture & Design	Construction Project Management	Construction & Trade	Cybersecurity Awareness	EIT Success	Engineering	Facilities Management & Maintenance	Health, Safety, Environment Premium	IT & Security	Professional Development	Project Management	Workplace Essentials
Aerial Boom Lift Platform Safety							•	•				
Aerial Work Platform Safety							•	•				
Agile Project Management: 01 - Agile Series Overview							•		•		•	
Agile Project Management: 02 - Traditional vs. Agile Project Management							•		•		•	
Agile Project Management: 03 - Agile Manifesto Principles 1 - 6							•		•		•	
Agile Project Management: 04 - Agile Manifesto Principles 7-12							•		•		•	
Agile Project Management: 05 - Value Driven Project Management							•		•		•	
Agile Project Management: 06 - Setting Vision and Prioritization in Agile Projects							•		•		•	
Agile Project Management: 07 - Scrum and Extreme Programming (XP) Methodologies							•		•		•	
Agile Project Management: 08 - Other Less-Common Agile Methodologies							•		•		•	
Agile Project Management: 09 - Planning Agile Projects							•		•		•	
Agile Project Management: 10 - Estimating Agile Projects							•		•		•	
Agile Project Management: 11 - Implementing Agile Projects							•		•		•	
Agile Project Management: 12 - Team Formation and Creating an Agile Environment							•		•		•	
Agile Project Management: 13 - Communication in Agile Projects							•		•		•	
Agile Project Management: 14 - Increasing Agile Stakeholder Engagement							•		•		•	
Agile Project Management: 15 - Soft Skills and Servant Leadership in Agile Projects							•		•		•	
Agile Project Management: 16 - Testing and Risk Management in Agile Projects							•		•		•	
Agile Project Management: 17 - Problem Detection, Metrics, and Resolution in Agile Projects							•		•		•	
Agile Project Management: 18 - Quality and Earned Value Management in Agile Projects							•		•		•	
Agile Project Management: 19 - Continuous Improvement for Management and Project Agility							•		•		•	
Agile Project Management: 20 - PMI Code of Conduct in Agile Management							•		•		•	
Agile Project Management: PMI Agile Certified Practitioner (PMI-ACP)® Exam Prep							•		•		•	
Agile Project Management: Test Me-PMI Agile Certified Practitioner (PMI-ACP)® Exam							•		•		•	
Agile: Adaptive Planning and Design									•		•	
Agile: Communication in Projects									•		•	
Agile: Continual Improvement									•		•	
Agile: Estimation									•		•	
Agile: Managing Projects									•		•	
Agile: Manifesto Principles 1 - 6									•		•	
Agile: Manifesto Principles 7-12									•		•	
Agile: Other Agile Methods									•		•	
Agile: Planning Agile Projects									•		•	
Agile: PMI Agile Certified Practitioner (PMI-ACP)® Exam Prep									•		•	
Agile: PMI Code of Conduct									•		•	
Agile: Prioritization and Risk Management in Agile Project Management									•		•	
Agile: Problem Detection, Metrics, and Resolution									•		•	
Agile: Quality and Earned Value Management									•		•	
Agile: Scrum and XP Methods									•		•	
Agile: Series Overview									•		•	
Agile: Soft Skills and Leadership									•		•	
Agile: Stakeholder Engagement									•		•	
Agile: Team Formation and Boosting Team Performance									•		•	
Agile: Test Me-PMI Agile Certified Practitioner (PMI-ACP)® Exam									•		•	
Agile: Traditional vs. Agile Project Management									•		•	
Agile: Value Driven Development									•		•	
AIA: Your Guide to the American Institute of Architects	•	•				•	•					
AIA's Essentials of Cost Management: Building Economics	•											
AIA's Essentials of Cost Management: Cost Management Methodology	•											
AIA's Essentials of Cost Management: Cost-Estimating Methodology	•											
AIA's Essentials of Cost Management: Cost-Estimating Tools	•											
Air Quality: U.S. Air Trends	•											
Air-Purifying Respirators								•				
Air-Supplying Respirators								•				
Ajax Development									•			
Akin v. Godwin - A Dave Gibson Lot and Block Case						•						
Alert Driving								•				
Algebra for Engineers - Method of Least Squares Part 2: Curve Fitting with the Linear Model					•	•						
Algebra for Engineers - Method of Least Squares Part 1: Fundamentals					•	•						
Algebra for Engineers & Others - Inductive Reasoning and Mathematical Induction					•	•						
Algebra for Engineers & Others - Numbers					•	•						
Algebra Method of Least Squares, Part 3 - Exponential and Power Functions					•	•						
Alternating Current							•					
American Chemistry Council's Responsible Care Program								•				
American Land Surveying - A History						•						
Ammonia Safety								•				
An Effective Leader's Guide to Time Management									•			



	Architecture & Design	Construction Project Management	Construction & Trade	Cybersecurity Awareness	EIT Success	Engineering	Facilities Management & Maintenance	Health, Safety, Environment Premium	IT & Security	Professional Development	Project Management	Workplace Essentials
An Entrepreneur's Guide to Networking												
An Introduction to Fitwel®	•		•		•	•	•					
Análise de perigo do arco elétrico (Arc Flash Hazard Analysis - The Basics)			•				•	•				
Análisis de riesgos por destello de arco (Arc Flash Hazard Analysis - The Basics)			•				•	•				
Analyzing Costs & Determining Fees for Land Surveyors						•						
Anatomy of Construction Defects	•		•			•	•					
Android Development for Beginners									•			
Anhydrous Ammonia Awareness								•				
Anti-Harassment Training for Supervisors and Managers - California									•	•		•
Appraising Performance		•							•	•	•	•
Arc Flash Hazard Analysis			•		•		•	•				
Arc Flash Safety								•				
Architect and Engineer Design Coordination	•				•	•						
Architectural Concrete	•											
'Are You Ready?' Checklist										•		
Asbestos Awareness								•				
Asbestos Awareness in General Industry							•	•				
Asbestos Management	•	•				•	•	•				
Asbestos: What Is It and Who Should Remove It?	•	•				•	•	•				
ASHRAE 100: Energy Efficiency in Existing Buildings	•	•			•	•	•					
ASHRAE Guideline 13-2014, Building Automation Systems	•	•			•	•	•					
Asphalt Pavement - Design Basics	•				•	•						
Assessing Occupational Exposure								•				
Asset Condition Management: Alignment and Balancing Training						•	•					
Asset Condition Management: Motor Testing						•	•					
Asset Condition Management: Setting Up an Oil Analysis Program						•	•					
Asset Condition Management: Vibration Analysis Training						•	•					
AutoCAD 2014: Part 1 - Introduction	•	•				•						
AutoCAD 2014: Part 2 - Editing Techniques	•	•				•						
AutoCAD 2014: Part 3 - Editing & Construction	•	•				•						
AutoCAD 2014: Part 4 - Drawing Aids and Utilities	•	•				•						
AutoCAD 2014: Part 5 -Template, Layouts, and Viewports	•					•						
AutoCAD 2014: Part 6 - Advanced Editing & Annotation	•					•						
AutoCAD/Land Desktop - Plotting Basics						•						
Automotive Turn Signal & Hazard Flashers - Federal Requirements								•				
Back Injury Prevention								•				
Back Injury Prevention for Retail Stores							•	•				
Back Safety							•	•				
Back Safety: Protection and Treatment Basics					•			•				
Baler Safety							•	•				
Bamboo Flooring and Beyond	•											
Barba v. Walker - A Dave Gibson Public Lands - Related Case						•						
Basic Blueprint Reading & Related Math	•	•				•	•	•				
Basic Civil Engineering - Asphalt						•	•					
Basic Civil Engineering - Culvert Design 1						•	•					
Basic Civil Engineering - Culvert Design 2						•	•					
Basic Civil Engineering - Sewage Treatment						•	•					
Basic Civil Engineering - Sewers and Sewerage						•	•					
Basic Civil Engineering - Sewers and Sewerage 2						•	•					
Basic Civil Engineering - Water Distribution 1						•	•					
Basic Civil Engineering - Water Distribution 2						•	•					
Basic Civil Engineering - Water Supply						•	•					
Basic Construction Math	•	•				•	•	•				
Basic Control Circuits								•				
Basic Electrical Safety								•				
Basic Electricity I						•	•	•				
Basic Electricity Review								•				
Basic Financials for Land Surveyors						•						
Basic Lubrication								•				
Basic Rigging, Part 1								•				
Basic Rigging, Part 2								•				
Basic Wind Loads ASCE 7-10	•	•				•	•					
Basics of Leadership: 01-Leadership Challenges		•							•	•	•	
Basics of Leadership: 02-Changes in Corporate Culture		•							•	•	•	
Basics of Leadership: 03-Keeping Employees Energized		•							•	•	•	
Basics of Leadership: 04-Knowledge Management		•							•	•	•	
Basics of Leadership: 05-Elements of Change in Business		•							•	•	•	





	Architecture & Design	Construction Project Management	Construction & Trade	Cybersecurity Awareness	EIT Success	Engineering	Facilities Management & Maintenance	Health, Safety, Environment Premium	IT & Security	Professional Development	Project Management	Workplace Essentials
Basics of Leadership: 06-Leadership Dynamics		•							•	•	•	
Basics of Soil Resources 1: Classification, Mapping and Data Bases			•		•	•						
Basics of Soil Resources 2: Erosion, Desertification, Salinization & Soil Acidification			•		•	•						
Basics of Water Resources: Groundwater Contamination			•		•	•						
Basics of Water Resources: Groundwater Hydrology			•		•	•						
Basics of Water Resources: Wetland Basics			•		•	•						
Bath Planning: Accessibility in Practice	•		•									
Bath Planning: Environmental and Sustainability Considerations	•		•									
Bath Planning: History, Research, and Trends	•		•									
Bath Planning: Human Factors, Universal Design, and Assessing Needs	•		•									
Bath Planning: Infrastructure Considerations	•		•									
Bath Planning: Mechanical Planning	•		•									
Bath Planning: More Than a Bathroom	•		•									
Bath Planning: Putting it All Together	•		•									
Bath Planning: What Goes Into Planning a Bathroom	•		•									
Batteries							•					
Battery Applications			•			•	•					
Bearings Basics							•					
Bed Bugs: Facts And Prevention							•	•				
Behavior-Based Safety								•				
Benzene: Safe Handling & Storage								•				
Best Practices for Creating Superior Land Description Plats						•						
Better Business Writing		•							•	•	•	•
Better Roadway Design - Curbs & Pedestrian Control Devices	•				•	•						
Better Roadway Design - Intersection Signalization	•				•	•						
Better Roadway Design - Intersection Signing	•				•	•						
Better Roadway Design - Intersections	•				•	•						
Better Roadway Design - Lane Assignment, Signals & Lighting	•				•	•						
BIM Essentials	•	•	•		•	•	•					
BIM Use and Risk Management	•	•	•			•	•					
Biofilms: An Introduction						•						
Biofilters: A Natural Approach to Storm Water Pollutant Removal	•		•			•						
Biomechanics: Understanding Barrier-Free Design						•						
Bioremediation Tactics								•				
Bipolar Transistors - BJT						•						
Blocking and Cribbing for Heavy Equipment								•				
Bloodborne Pathogens							•	•				
Bloodborne Pathogens for Custodians							•	•				
Bloodborne Pathogens for Hospitality								•				
Bloodborne Pathogens for Schools								•				
Bloodborne Pathogens for the Hospitality Industry							•	•				
Bloodborne Pathogens in First Response Environments							•	•				
Bloodborne Pathogens in Healthcare Facilities							•	•				
Bloqueo/etiquetado (Lockout/Tagout)							•	•				
Boiler Fundamentals							•					
Boiler Instruments and Controls							•					
Boiler Technology						•	•					
Boilers: Basic Principles and Types							•					
Boilers: Combustion, Water, and Steam							•					
Boilard Boot Camp - How to Protect Places and People From Vehicle Incursions	•		•		•	•	•					
Boom Truck - Bucket Truck Safety							•	•				
Boundary Agreements						•						
Boundary Disputes Between Adjoining Land Owners: Resolutions, Practices & Procedures						•						
Boundary Monuments: Artificial and Natural Markers						•						
Box Cutter Safety							•	•				
(BP) A+ 2016: Mobile Devices-Configuração do Computador Portátil e Resolução de Problemas									•			
(BP) A+ 2016: Mobile Devices-Dispositivos Móveis									•			
(BP) A+ 2016: Mobile Devices-Resolução de Problemas em Dispositivos Móveis									•			
(BP) A+ 2016: Mobile Devices-Sistemas Operacionais para Dispositivos Móveis									•			
(BP) A+ 2016: Mobile Devices-Usando os Recursos do Computador Portátil									•			
(BP) A+ 2016: Networking-Cabos, Conectores e Ferramentas de Rede									•			
(BP) A+ 2016: Networking-Conexões e Roteadores de Internet									•			
(BP) A+ 2016: Networking-Dispositivos de Rede									•			
(BP) A+ 2016: Networking-Protocolos de Rede									•			
(BP) A+ 2016: Networking-Rede Wi-Fi									•			
(BP) A+ 2016: Operating Systems-As Roles do Servidor e Gerenciamento de Ameaças									•			
(BP) A+ 2016: Operating Systems-Computação em nuvem e Virtualização									•			





	Architecture & Design	Construction Project Management	Construction & Trade	Cybersecurity Awareness	EIT Success	Engineering	Facilities Management & Maintenance	Health, Safety, Environment Premium	IT & Security	Professional Development	Project Management	Workplace Essentials
Breakthrough Safety Leadership for Hospitality							•	•				
Bridge Inspection and Maintenance: Laws and Requirements						•						
Browser Security Basics							•		•	•		•
Building a Sustainable Future	•					•						
Building Age Friendly Cities	•		•			•						
Building Design and Construction Features for Fire Protection							•					
Building for Senior Living: Building Codes, Sustainability, and Structural Systems	•		•			•						
Building for Senior Living: Interior Design Elements and Considerations	•											
Building for Senior Living: Mechanical, Plumbing, Fire-Protection, Electrical, Communications, and Low-Voltage	•											
Building for Senior Living: Programming and Planning Guidelines for Facilities Part 1	•											
Building for Senior Living: Programming and Planning Guidelines for Facilities Part 2	•											
Building for Senior Living: The Future of Senior Living	•											
Building Information Modeling (BIM) - An Introduction	•	•	•		•	•	•					
Building Information Modeling (BIM) - Tools	•		•		•	•	•					
Building Information Modeling (BIM) for Architects and Engineers	•				•	•						
Building Information Modeling (BIM) for Contractors			•		•	•	•					
Building Information Modeling (BIM) for Owners and Facility Managers			•		•		•					
Building Leadership Capability									•			
Building Pathology: An Introduction	•		•			•						
Building Pathology: Columns and Walls	•		•			•						
Building Pathology: Foundations	•		•			•						
Building Pathology: Freeze-Thaw Cycling	•		•			•						
Building Pathology: Materials Pathology	•		•			•						
Building Pathology: Members and Connections	•		•			•						
Building Pathology: Parapets & Decks	•		•			•						
Building Pathology: Rising Damp & Salt Decay	•		•			•						
Building Pathology: Roofs	•		•			•						
Building Pathology: Site Drainage Problems	•		•			•						
Building Pathology: Thermal Movement, Corrosion, & the Ozone	•		•			•						
Building Pathology: Utilities, Environmental & Protection Systems	•		•			•	•					
Building Pathology: Walls and Thermodynamics	•		•			•						
Building Performance: Design Through Operations	•		•			•	•					
Building Systems for Designers - Advanced Acoustic Design Principles	•				•							
Building Systems for Designers - Electrical Appliances and Communications Equipment	•				•							
Building Systems for Designers - Electrical Systems Basics	•				•							
Building Systems for Designers - Fire Safety	•				•							
Building Systems for Designers - Heating and Cooling Systems	•				•							
Building Systems for Designers - Indoor Air Quality	•				•							
Building Systems for Designers - Introduction to Acoustic Design Principles	•				•							
Building Systems for Designers - Lighting Systems	•				•							
Building Systems for Designers - Principles of Thermal Comfort	•				•							
Building Systems for Designers - Structural Systems	•				•							
Building Systems for Designers - Toilet and Bath Design	•				•							
Building Systems for Designers - Water Supply, Distribution, and Waste Systems	•				•							
Building Systems for Designers: The Building and Its Environment	•				•							
Bus Persons Dishwashers and Janitor Safety (Hospitality)							•	•				
Business Communication Fundamentals		•							•	•	•	•
Business Dining Etiquette									•			
Business Disputes: Alternative Resolutions to Litigation	•	•								•	•	
Business Ethics										•		
Business Ethics: Quick Refresh									•	•		•
Business Execution: 01-Execution Strategies		•							•	•	•	
Business Execution: 02-Inspiring Workplace Excellence		•							•	•	•	
Business Execution: 03-Turning Ideas into Actions		•							•	•	•	
Business Management: Brief Overview		•			•					•		•
Business Rules for Land Surveyors						•						
Campus Planning - An Introduction	•											
Campus Planning- Sustainability	•		•			•						
Capacitor Applications			•			•	•					
Capacitors, Part 1							•					
Capacitors, Part 2							•					
Carbon Monoxide: The Facts – Hospitality							•	•				
Carbon Tracking/Reduction Strategies for Facility Design and Operations	•					•	•					
CCNA Routing and Switching: 01-Operation of IP Data Networks									•			
CCNA Routing and Switching: 02-LAN Switching and WAN Technologies									•			
CCNA Routing and Switching: 03-IPv4 and IPv6									•			
CCNA Routing and Switching: 04-System and Network Management									•			





	Architecture & Design	Construction Project Management	Construction & Trade	Cybersecurity Awareness	EIT Success	Engineering	Facilities Management & Maintenance	Health, Safety, Environment Premium	IT & Security	Professional Development	Project Management	Workplace Essentials
CCNA Routing and Switching: 05-IP Routing Technologies									•			
CCNA Routing and Switching: 06-IP Services and Security									•			
CCNA Routing and Switching: 07-Troubleshooting Routers and Switches									•			
CCNA Routing and Switching: Test Me-Cisco 200-120 CCNA									•			
CCNA Security: 01-Security and Cisco Routers									•			
CCNA Security: 02-AAA on Cisco Devices									•			
CCNA Security: 03-IOS ACLs									•			
CCNA Security: 04-Secure Network Management									•			
CCNA Security: 05-Common Layer 2 Attacks									•			
CCNA Security: 06-Cisco Firewall Technologies									•			
CCNA Security: 07-Cisco IPS									•			
CCNA Security: 08-VPN Technologies									•			
CCNA Security: Test Me-Cisco Exam CCNA Security									•			
CCNA Wireless: 01-WLAN Fundamentals									•			
CCNA Wireless: 02-Installation of a Basic Cisco Wireless LAN									•			
CCNA Wireless: 03-Installation of Wireless Clients									•			
CCNA Wireless: 04-Basic WLAN Security									•			
CCNA Wireless: 05-Basic WCS Operation									•			
CCNA Wireless: 06-Basic WLAN Maintenance and Troubleshooting									•			
CCNA Wireless: Test Me-Cisco Exam CCNA Wireless 640-722 IUWNE									•			
Centrifugal Compressors							•					
Centrifugal Pumps			•			•	•					
Centrifugal Pumps - Components, Operation and Energy Conversion			•			•	•					
Centrifugal Pumps Basics, Part 1						•	•					
Centrifugal Pumps Basics, Part 2						•	•					
Chains Cranes Slings & Hoists						•	•	•				
Chainsaw Accidents - The Consequences						•	•	•				
Chainsaw Safety						•	•	•				
Change Management										•		
Channel Restoration Design 1: An Alternative to Channelization						•						
Channel Restoration Design 2: Designers & Their Toolkits						•						
Channel Restoration Design 3: A Design Framework						•						
Chemical Unloading Basics								•				
Chemicals Used in Mold Remediation			•									
Chlorine Dioxide Awareness								•				
Choosing the Best Structural Lateral Force Resisting System						•						
Circuit Analysis (AC): Average & Effective Value			•			•	•					
Circuit Analysis (AC): Complex Numbers & Phasors			•			•	•					
Circuit Analysis (AC): Dependent Sources			•			•	•					
Circuit Analysis (AC): RLC Circuit Response			•			•	•					
Circuit Analysis (AC): Series & Parallel Circuits			•			•	•					
Circuit Analysis (AC): Series & Parallel Networks			•			•	•					
Circuit Analysis (AC): Sinusoidal General Format & Phase Relationships						•	•					
Circuit Analysis (AC): Sinusoidal Generation and Definitions						•	•					
Circuit Analysis (AC): Thevenin's Theorem			•			•	•					
Circuit Analysis (DC Conventional): Current & Voltage in Parallel Circuits						•	•					
Circuit Analysis (DC Conventional): Current & Voltage in Series Circuits						•	•					
Circuit Analysis (DC Conventional): Current, Voltage, & Resistance						•	•					
Circuit Analysis (DC Conventional): Ohm's Law & Power						•	•					
Circuit Analysis (DC Conventional): Series - Parallel Networks						•	•					
Circuit Analysis (DC Conventional): Series & Parallel Resistors						•	•					
Circuit Analysis (DC Electron Flow): Current & Voltage in Parallel Circuits						•	•					
Circuit Analysis (DC Electron Flow): Current & Voltage in Series Circuits						•	•					
Circuit Analysis (DC Electron Flow): Current, Voltage, & Resistance						•	•					
Circuit Analysis (DC Electron Flow): Ohm's Law & Power						•	•					
Circuit Analysis (DC Electron Flow): Series - Parallel Networks						•	•					
Circuit Analysis (DC Electron Flow): Series & Parallel Resistors						•	•					
CISSP: 01 - Introducing Security									•			
CISSP: 02 - Compliance and Regulations									•			
CISSP: 03 - Security Management									•			
CISSP: 04 - Risk Management									•			
CISSP: 05 - Asset Classification									•			
CISSP: 06 - Asset Management									•			
CISSP: 07 - Security Design									•			
CISSP: 08 - Vulnerability Assessment									•			
CISSP: 09 - Applied Security									•			
CISSP: 10 - Public Key Infrastructure									•			



	Architecture & Design	Construction Project Management	Construction & Trade	Cybersecurity Awareness	EIT Success	Engineering	Facilities Management & Maintenance	Health, Safety, Environment Premium	IT & Security	Professional Development	Project Management	Workplace Essentials
CISSP: 11 - Network Architecture									•			
CISSP: 12 - Network Component Security									•			
CISSP: 13 - Secure Communication Channels									•			
CISSP: 14 - Prevention of Network Attacks									•			
CISSP: 15 - Identity and Authentication									•			
CISSP: 16 - Access Control Attacks									•			
CISSP: 17 - Security Assessment									•			
CISSP: 18 - Security Testing									•			
CISSP: 19 - Security Investigations									•			
CISSP: 20 - Secure Provisioning of Assets									•			
CISSP: 22 - Recovery Strategies									•			
CISSP: 23 - Personnel Security									•			
CISSP: 24 - Software Development Lifecycles									•			
CISSP: 25 - Software Security Solutions									•			
CISSP: Test Me: CISSP									•			
Clases de incendios y extintores (Classes of Fires and Extinguishers)							•	•				
Clean And Safe: Restrooms							•	•				
Clean Water Act Section 404 Permits								•				
Clear Communication										•		
Coaching Job Skills: 01-Determining Training Or Coaching									•			
Coaching Job Skills: 02-Your Path to Training New Skills									•			
Coaching Job Skills: 03-Your Path to Coaching Existing Skills									•			
Coaching Job Skills: 04-Mastering Training New Skills									•			
Coaching Job Skills: 05-Mastering Coaching Existing Skills									•			
Coaching Job Skills: 06- Health Check									•			
Coaching with Confidence		•							•	•	•	
Coastal Engineering: Hurricanes and Nor'easters	•					•						
Coastal Engineering: Sea Level Rise	•					•						
Coastal Engineering: Tsunamis	•						•					
Codeless Web Development with Adobe Muse									•			
Cogeneration Systems Essentials	•	•				•	•					
Cold Stress								•				
Cold Stress – Working Safely in Cold Weather							•	•				
Collaborative Communication: 01-Communicating to Your Manager									•			
Collaborative Communication: 02-Your Manager's Communication Style									•			
Collaborative Communication: 03-Your Path to Communicating Up									•			
Collaborative Communication: 04-Mastering Communicating Up									•			
Collaborative Communication: 05-Communicating Up Health Check									•			
Combustible Dust - Things That Go Boom								•				
Combustible Dusts								•				
Combustion Analysis						•	•					
Commercial & Residential Mixed Use Development and Sustainability	•	•				•						
Commercial Application Electric Transformers			•			•						
Commercial Application Transformers			•			•						
Commercial Building MEP Design	•			•	•							
Commercial Electrical Systems Essentials			•	•	•							
Commercial Explosives Safety								•				
Commercial HVAC Building Envelope	•	•		•	•	•						
Commercial HVAC Systems Essentials		•		•	•	•						
Commercial Kitchen Fire Prevention							•	•				
Commercial Plumbing Systems Essentials		•	•	•	•	•						
Commercial Solar Power Systems	•	•		•	•							
Commercial Structural and Building Systems Essentials		•	•	•	•	•						
Common Indoor Air Quality (IAQ) Measurements		•	•	•	•	•						
Common Myths of Wastewater Design and Operations		•	•	•	•	•						
Communication Skills for Supervisors										•		
Company Layoffs and Downsizing									•			
Complete Streets - An Introduction to the Complete Streets Concept	•	•				•						
Complete Streets - An Introduction to the Design of Complete Streets	•	•				•						
Completing the Mold Remediation			•									
Compressed Air Energy Efficiency			•			•	•					
Compressed Air Systems in Industrial Plants						•						
Compressed Air Systems: Introduction to Performance Improvement						•	•					
Compressed Gas Cylinder Safety								•				
Compressible Flow Components Analysis						•	•					
Compressors: Centrifugal and Axial							•					
Compressors: Introduction							•					



	Architecture & Design	Construction Project Management	Construction & Trade	Cybersecurity Awareness	EIT Success	Engineering	Facilities Management & Maintenance	Health, Safety, Environment Premium	IT & Security	Professional Development	Project Management	Workplace Essentials
Compressors: Operation of Centrifugal and Axial Types							•					
Compressors: Positive Displacement							•					
Computer Analysis of Structures: An Introduction						•						
Comunicación de riesgos (Hazard Communication)							•	•				
Concrete 1: Evaluation and Causes of Damage			•	•	•							
Concrete 2: Repair Planning and Preparation			•	•	•							
Concrete 3: Methods, Materials, and Maintenance			•	•	•							
Concrete Additives: Water-Repellency & Efflorescence Control in Masonry			•		•							
Concrete Fundamentals - Concrete Slab On Grade			•	•	•							
Concrete Fundamentals: An Introduction				•	•							
Concrete Pavement Rehabilitation - Diamond Grinding			•		•							
Concrete Pavement Rehabilitation - Full Depth Repair			•		•							
Concrete Pavement Rehabilitation - Partial Depth Repair			•		•							
Concrete Pavement: Glass Fiber Reinforced Polymers			•		•							
Concrete Standards and Requirements	•	•		•	•							
Concrete: Self-Consolidating (SCC)					•							
Condensate Recovery and Steam Traps							•					
Conductors							•					
Configuring Server 2012 (70-412): 01-Configuring File and Storage Solutions in Windows Server 2012									•			
Configuring Server 2012 (70-412): 02-Configuring Network Services in Windows Server 2012									•			
Configuring Server 2012 (70-412): 03-Configuring the Active Directory Infrastructure in Windows Server 2012									•			
Configuring Server 2012 (70-412): 04-Configuring Identity and Access Solutions in Windows Server 2012									•			
Configuring Server 2012 (70-412): 05-Configuring and Managing High Availability in Windows Server 2012									•			
Configuring Server 2012 (70-412): 06-Implementing Business Continuity and Disaster Recovery in Windows Server 2012									•			
Configuring Server 2012 (70-412): 07-What's New in Windows Server 2012 R2									•			
Configuring Server 2012 (70-412): Show Me-Configure Identity and Access Solutions									•			
Configuring Server 2012 (70-412): Show Me-Configuring and Managing High Availability									•			
Configuring Server 2012 (70-412): Show Me-Configuring File and Storage Solutions									•			
Configuring Server 2012 (70-412): Show Me-Configuring Network Services									•			
Configuring Server 2012 (70-412): Show Me-Configuring the Active Directory Infrastructure									•			
Configuring Server 2012 (70-412): Show Me-Implementing Business Continuity and Disaster Recovery									•			
Configuring Server 2012 (70-412): Test Me-Microsoft Exam 70-412									•			
Confined Space Entry - Permit Required								•				
Confined Space Entry Awareness								•				
Confined Spaces in Construction				•			•	•				
Conflict Management										•		
Conflict Resolution									•			
Conflicting and Non-Existent Accessibility Standards	•	•					•					
Constructed Wetlands - Free Water Surface Wetlands	•					•						
Constructed Wetlands - Introduction & Basic Concepts	•					•						
Constructed Wetlands - Pollutant Removal Mechanisms	•					•						
Constructed Wetlands - Vegetated Submerged Beds	•					•						
Construction Administration: MEP Commercial Buildings		•										
Construction Claims: Acceleration		•		•								
Construction Claims: Changed Work				•								
Construction Claims: Delay		•		•								
Construction Claims: Labor Productivity Loss		•		•								
Construction Claims: Termination		•		•								
Construction Mediation: A Brief Overview - Beginner	•			•	•							
Construction Mediation: An Introduction - Beginner	•			•	•							
Construction Mediation: Participating Effectively as a Party - Advanced	•				•							
Construction Mediation: Participating Effectively as a Party - Intermediate	•				•							
Construction of AC and DC Circuits							•					
Construction Project Delivery Systems	•	•		•								
Construction Project Documentation: Navigating Pitfalls				•	•	•						
Construction Site Stormwater Runoff Control								•				
Contactors and Relays							•					
Contract Guide for Design Professionals - Basic Principles	•			•								
Contractor Lawsuits Against Design Professionals	•			•								
Convenience Store Safety							•	•				
Conveyor Safety								•				
Corrosion Control: Transportation of Natural and Other Gases by Pipeline								•				
Corrugated Steel Pipe Durability						•						
Cost Estimating: Fundamentals	•	•		•	•							
Costs and Benefits of Natural Hazard Mitigation	•	•			•							
Couplings							•					
Co-worker Coaching										•		





	Architecture & Design	Construction Project Management	Construction & Trade	Cybersecurity Awareness	EIT Success	Engineering	Facilities Management & Maintenance	Health, Safety, Environment Premium	IT & Security	Professional Development	Project Management	Workplace Essentials
CPM Scheduling		•					•					
CPM Scheduling Part I							•					
CPM Scheduling Part II							•					
CPR Academic								•		•		•
Crane and Hoist Rigging Safety								•				
Crane Hand Signals								•				
Crane Safety				•			•	•				
Crane Safety - The New Regulation							•	•				
Crane Signal Person Basic Training							•	•				
Create a Windows App Using Free Tools and No Coding									•			
Creating a Code of Conduct									•			
Crime Prevention Through Environmental Design: Surveys & Floor Plan Reviews	•								•			
Critical Facilities - Emergency Electric Power				•	•	•						
Critical Thinking and Problem Solving									•			
Crystalline Silica Awareness								•				
Crystalline Silica: Understanding the Hazards								•				
CSS Development with CSS3									•			
Culvert Design for Fish Passage 1 - Basics and Design						•						
Culvert Design for Fish Passage 2 - Advanced Topics						•						
Culvert Sizing Using HY-8 Version 7.0 - Part 1: Basics						•						
Cybersecurity Awareness for Business Leaders: Creating A Cyber Security Culture				•						•		•
Cybersecurity Awareness for Business Leaders: Incident Preparedness and Management Planning				•						•		•
Cybersecurity Awareness for Business Leaders: Laws and Global Compliance Standards				•						•		•
Cybersecurity Awareness for Business Leaders: Safeguarding Against Social Engineer Attacks				•						•		•
Cybersecurity Awareness for Employees: Classifying and Safeguarding Data for Corporate and Personal Use				•						•		•
Cybersecurity Awareness for Employees: End-User Best Practices				•						•		•
Cybersecurity Awareness for Employees: Security Awareness Essentials				•						•		•
Cybersecurity Awareness for Employees: Social Engineering				•						•		•
Cybersecurity Overview							•		•	•		•
Data Centers: Connectivity Requirements and Architectural Layouts	•	•				•						
Data Centers: MEP, Fire Protection, and Equipment Rooms	•	•				•						
Data Centers: Operations & Maintenance, Upgrades, and Expansions	•	•				•	•					
Data Centers: Planning, Siting, and Selecting	•	•				•						
Data Centers: Trends, Technologies, and Efficiencies	•	•				•	•					
Dave Gibson's All-Star Metes & Bounds Boundary Cases						•						
Daylighting 1: Fundamentals	•											
Daylighting 2: Occupant Productivity, Glazing Properties, & Electric Lighting	•											
Daylighting 3: Design Tools	•											
DC Fundamentals Review							•					
DC Generator Basics							•					
DC Motor Basics							•					
DC Motor Controller Maintenance, Part 1							•					
DC Motor Controller Maintenance, Part 2							•					
DC Motor Maintenance							•					
DC Power in the Data Center						•	•					
Decision Making										•		
Deck Building Advanced			•									
Deck Building Basics			•									
Decks, Stairs, Rails for Home Inspectors			•									
Deconstruction and Reuse: Sustainable Construction in Reverse	•	•				•						
Design & Construction Claims	•			•	•							
Design for Coders									•			
Design of Bicycle Facilities - Buffered Bike Lanes	•	•				•						
Design of Bicycle Facilities - Cycle Track Design	•	•				•						
Design of Buildings for Coastal Flooding	•	•				•						
Design of Buildings Using Insulated Concrete Forms (ICF)						•						
Design of Reinforced Concrete Using the ACI Code: Analysis and Design of T Beams and Doubly Reinforced Beams	•	•				•						
Design of Reinforced Concrete Using the ACI Code: Bond, Development Lengths, and Splices	•	•				•						
Design of Reinforced Concrete Using the ACI Code: Design of Rectangular Beams and One-Way Slabs	•	•				•						
Design of Reinforced Concrete Using the ACI Code: Design of Short Columns Subject to Axial Load and Bending	•	•				•						
Design of Reinforced Concrete Using the ACI Code: Flexural Analysis of Beams	•	•				•						
Design of Reinforced Concrete Using the ACI Code: Introduction	•	•				•						
Design of Reinforced Concrete Using the ACI Code: Introduction to Columns	•	•				•						
Design of Reinforced Concrete Using the ACI Code: Serviceability	•	•				•						
Design of Reinforced Concrete Using the ACI Code: Shear and Diagonal Tension	•	•				•						
Design of Reinforced Concrete Using the ACI Code: Slender Columns	•	•				•						
Design of Reinforced Concrete Using the ACI Code: Strength Analysis of Beams	•	•				•						



	Architecture & Design	Construction Project Management	Construction & Trade	Cybersecurity Awareness	EIT Success	Engineering	Facilities Management & Maintenance	Health, Safety, Environment Premium	IT & Security	Professional Development	Project Management	Workplace Essentials
Design of Reinforced Concrete Using the ACI Code: Two-Way Slabs, Equivalent Frame Method	•		•			•						
Design of Steel Elements for Second Order Effects												
Design of Utility Infrastructure	•				•	•	•					
Design of Water Efficient Buildings	•		•			•						
Design of Wick Drains	•					•						
Design Traffic and Traffic Impact Study for the Non-traffic Engineer						•						
Design-Build - An Introduction	•	•			•	•						
Design-Build in the Public Sector	•				•	•						
Design-Build Professional Liability Risk Management & Insurance - Introduction	•	•			•	•						
Design-Build Project Delivery System	•	•			•	•						
Design-Build Project Implementation	•	•			•	•						
Design-Build Teaming: Designer & Builder Relationship	•	•			•	•						
Design-Build Teaming: Liability	•	•			•	•						
Design-Build: Lessons Learned - Series 2, Part 1	•	•			•	•						
Design-Build: Lessons Learned - Series 2, Part 2	•	•			•	•						
Design-Build: Lessons Learned - Series 2, Part 3	•	•			•	•						
Designing and Specifying Pervious Concrete	•	•				•	•					
Designing Buildings for Tornadoes	•	•				•						
Designing for Flood Loads Using ASCE	•	•				•						
Designing for Occupant Comfort: SPF Insulation	•											
Designing Foundation Repairs						•	•					
Designing Permanent Erosion and Sediment Control Systems	•	•				•						
Designing PEX Plumbing Systems to Optimize Performance and Efficiency			•			•	•					
Designing Server 2012 (70-413): 01-Planning and Deploying a Server Infrastructure in Windows Server 2012									•			
Designing Server 2012 (70-413): 02-Designing and Implementing Network Infrastructure Services in Windows Server 2012									•			
Designing Server 2012 (70-413): 03-Designing and Implementing Network Access Services in Windows Server 2012									•			
Designing Server 2012 (70-413): 04-Designing and Implementing a Logical AD Infrastructure									•			
Designing Server 2012 (70-413): 05-Designing and Implementing a Physical AD Infrastructure									•			
Designing Server 2012 (70-413): Show Me-Designing and Implementing a Logical AD Infrastructure									•			
Designing Server 2012 (70-413): Show Me-Designing and Implementing a Physical AD Infrastructure									•			
Designing Server 2012 (70-413): Show Me-Designing and Implementing Network Access Services									•			
Designing Server 2012 (70-413): Show Me-Designing and Implementing Network Infrastructure Services									•			
Designing Server 2012 (70-413): Show Me-Planning and Deploying a Server Infrastructure									•			
Designing Server 2012 (70-413): Test Me-Microsoft Exam 70-413									•			
Designing Temporary Erosion and Sediment Control Systems	•	•				•						
Designing Using LRFD Principles	•					•						
Designing with Structural Composite Lumber	•					•						
Developing & Managing a Project Budget		•			•	•				•		
Developing 3D Engineered Construction Models	•	•			•	•						
Developing an Employee Safety Training Program							•	•				
Developing an Office Safety Mindset								•				
Developing and Implementing an EPA RMP							•	•				
Developing Performance Goals & Standards: 01-The Value of Planning									•			
Developing Performance Goals & Standards: 02-Creating Performance Standards									•			
Developing Performance Goals & Standards: 03-Your Path to Developing Performance Goals and Standards									•			
Developing Performance Goals & Standards: 04-Mastering Developing Performance Goals and Standards									•			
Developing Performance Goals & Standards: 05-Developing Performance Goals and Standards Health Check									•			
Developing Your Leadership Style									•			
Diagnosing and Mitigating IAQ Problems		•				•	•					
Diagnosing and Mitigating IAQ Problems Part I		•				•	•					
Diagnosing and Mitigating IAQ Problems Part II		•				•	•					
Diagrams: Blueprints							•					
Direct and Alternating Current							•					
Disabilities in the Workplace										•		
Discipline - ILDIS00CEN										•		
Discrimination in the Workplace										•		
Discrimination Prevention									•			
Dishwashers: Safe Work Practices							•	•				
Distillation: Control Systems							•					
Diversity in the Workplace										•		
Don Wilson's Court Decisions: Block 1 - Surveying Definitions; Overlapping Titles & Descriptions						•						
Don Wilson's Court Decisions: Block 2 - Description Interpretation						•						
Don Wilson's Court Decisions: Block 3 - Rules of Construction for Interpreting Descriptions						•						
Don Wilson's Court Decisions: Block 4 - Surveying Procedures						•						
Don Wilson's Court Decisions: Block 5 - Boundary Retracement 1						•						
Don Wilson's Court Decisions: Block 6 - Boundary Retracement 2						•						
Don Wilson's Court Decisions: Block 7 - Boundary Retracement 3						•						







	Architecture & Design	Construction Project Management	Construction & Trade	Cybersecurity Awareness	EIT Success	Engineering	Facilities Management & Maintenance	Health, Safety, Environment Premium	IT & Security	Professional Development	Project Management	Workplace Essentials
Electric Motors & Generators: Generators and Alternators						•	•					
Electric Power Generation			•			•						
Electric Power Plant Design Part 1: Site Selection, Design, Systems & Components			•			•						
Electric Power Substations			•			•						
Electric Power Transformers						•						
Electric Shock								•				
Electric System Reliability Indices			•			•						
Electrical 1: Cable Tray							•					
Electrical 1: Commercial and Industrial Wiring							•					
Electrical 1: Conductors							•					
Electrical 1: Electrical Diagrams							•					
Electrical 1: Electrical Safety							•					
Electrical 2: Boxes and Fittings							•					
Electrical 2: Circuit Breakers and Fuses							•					
Electrical 2: Electrical Lighting							•					
Electrical 2: Grounding							•					
Electrical 2: Installation of Electrical Services							•					
Electrical 2: Motors: Theory and Application							•					
Electrical and Arc Flash Hazards			•			•	•					
Electrical Characteristics of Conductors			•			•	•					
Electrical Conductor Sizing						•	•					
Electrical Equipment: AC and DC Motors							•					
Electrical Equipment: Electrical Production and Distribution							•					
Electrical Equipment: Motor Controllers and Operation							•					
Electrical Equipment: Specifying the 3-Phase Substation Transformer						•						
Electrical General Requirements								•				
Electrical Installations 1: Electrical Laws, Components and Circuits			•			•	•					
Electrical Maintenance: Battery Systems							•					
Electrical Maintenance: Fasteners							•					
Electrical Maintenance: Introduction to the NEC							•					
Electrical Maintenance: Relays, Part 1							•					
Electrical Maintenance: Relays, Part 2							•					
Electrical Maintenance: Troubleshooting Electrical Circuits							•					
Electrical Phase Converters			•			•	•					
Electrical Protection Grounding			•			•	•					
Electrical Safety							•	•				
Electrical Safety for Qualified Employees							•					
Electrical Safety for Unqualified Employees							•					
Electrical Safety General Awareness							•					
Electrical Systems - OTESY20CEN							•					
Electrical Systems and Equipment, Part 1							•					
Electrical Systems and Equipment, Part 2							•					
Electrical Tools: Digital Multimeters I - Operation			•			•	•					
Electrical Tools: Digital Multimeters II - Applications			•			•	•					
Electrical Wiring Methods								•				
Electrical Wiring: Cables and Conductors							•					
Electrical Wiring: Conduit Installation							•					
Electrical Wiring: Splices and Terminations							•					
Electrical Work for Florida Pool Contractors			•									
Electromagnetic Relays							•					
Email and Messaging Safety							•	•	•			•
Email Basics									•			
Email Etiquette		•						•	•	•		•
Emergency Electric Power			•			•						
Emergency First Aid							•	•				
Emergency Management Guide							•	•				
Emergency Planning							•	•				
Emergency Plans and Response Training for Gas Pipelines							•					
Emergency Preparedness & Response							•	•				
Emission Controls								•				
Employee Discipline									•			
Employee or Independent Contractor: The Risk of Misclassification of Employees								•	•			•
Energy Conversion Analysis							•					
Energy Conversion Analysis (RV-10839)						•						
Energy Conversion Ideal vs Real Operation Analysis						•	•					
Energy Efficient Water Heating	•	•				•	•					
Energy From Waste				•		•	•					







	Architecture & Design	Construction Project Management	Construction & Trade	Cybersecurity Awareness	EIT Success	Engineering	Facilities Management & Maintenance	Health, Safety, Environment Premium	IT & Security	Professional Development	Project Management	Workplace Essentials
Ethics for the Practicing Engineer - An Introduction					•	•						
Ethics for the Practicing Engineer - Managing Risks Imposed on the Public					•	•						
Ethics for the Practicing Engineer - Organizational Issues					•	•						
Ethics: Shades of Green	•		•		•	•						
Ethylene Oxide Safety								•				
Etiquetas y señales de advertencia (Warning Signs and Labels)							•	•				
Evacuation Procedures							•	•				
Everyone is a Leader									•			
Excavation Safety and Shoring/OSHA								•				
Excel: Proposal Preparation & Analysis for Engineers and Architects	•				•					•		
Existing Building Commissioning: Implementing Retrocommissioning on Your Project						•	•					
Exit Routes, Emergency Action Plans & Fire Prevention Plans							•	•				
Explosive and Flammable Chemicals						•	•	•				
Eye and Face Protection								•				
Facilitating Meetings and Groups		•							•	•	•	•
Facility Asset Management							•					
Facility Maintenance Management							•					
Facility Management Essentials							•					
Fall Prevention and Protection								•				
False Alarm Prevention			•				•					
Fans							•					
Federal Acquisition Regulation Overview 3.10									•			
Feng Shui: Life Map	•											
Feng Shui: The Basics	•											
Filtration and Air Cleaning	•						•					
Finance & Accounting for the Non-Financial Manager		•					•		•	•	•	
Financial Management 1: Negotiating Contracts		•			•		•		•	•	•	
Financial Management 2 & 3: Pricing for Profits, Generating Cash and Getting Paid		•			•		•		•	•	•	
Financial Management 4: Accounting & Cash		•			•		•		•	•	•	
Financial Management 5: Strategic Planning & Budgeting		•			•		•		•	•	•	
Financial Management 6 & 7: Financial Controls, Monitoring & Project Budgeting		•			•		•		•	•	•	
Financial Management 8: Controlling Labor Costs		•			•		•		•	•	•	
Financial Management 9: Purchasing		•			•		•		•	•	•	
Fire Alarm Essentials	•		•		•	•	•					
Fire and Smoke Dampers Simplified								•				
Fire Essentials and Fire Science	•		•			•	•					
Fire Extinguisher Safety								•				
Fire Prevention in Healthcare								•	•			
Fire Safety							•	•				
Fire Safety Design: Egress & Extinguishing Systems	•					•						
Fire Water Systems – Storage, Pumping & Distribution	•						•					
Fire! Designing Means of Escape	•					•		•				
First Aid - Alcohol and Drug Overdose								•				
First Aid - Animal and Human Bites and Scratches								•				
First Aid - Automated External Defibrillator (AED)								•				
First Aid - Bleeding Emergencies								•				
First Aid - Breathing Emergencies								•				
First Aid - Broken Bones and Dislocations								•				
First Aid - Burns								•				
First Aid - Cardiopulmonary Resuscitation (CPR)								•				
First Aid - Dehydration								•				
First Aid - Diabetic Emergencies								•				
First Aid - Eye Injuries								•				
First Aid - Fire Ant Bites and Stings								•				
First Aid - Flying Insect Stings								•				
First Aid - Head Injuries and Concussions								•				
First Aid - Head, Neck, Back, and Spine Injuries								•				
First Aid - Heart Attacks and Cardiac Arrest								•				
First Aid - Initial Steps								•				
First Aid - Poisoning								•				
First Aid - Scorpion Stings								•				
First Aid - Seizures								•				
First Aid - Shock								•				
First Aid - Snake Bites								•				
First Aid - Spider Bites								•				
First Aid - Sprains and Strains								•				
First Aid - Stroke								•				







	Architecture & Design	Construction Project Management	Construction & Trade	Cybersecurity Awareness	EIT Success	Engineering	Facilities Management & Maintenance	Health, Safety, Environment Premium	IT & Security	Professional Development	Project Management	Workplace Essentials
General Industry Safety - Confined Spaces							•	•				
General Industry Safety - Fall Protection							•	•				
General Industry Safety - Hazard Communication							•	•				
General Industry Safety - Hearing Conservation							•	•				
General Industry Safety - Personal Protective Equipment							•	•				
General Property Surveys & Real Property Law						•						
General Safe Work Practices In Hospitality							•	•				
Generating Electricity			•		•	•						
Geothermal Energy			•		•	•						
Geothermal Heat Pumps			•		•	•						
Get SMARTER with Goals									•			
Giving Feedback that Gets Results									•			
Globally Harmonized System for Hazard Communications - Hospitality							•	•				
Globally Harmonized System Overview							•	•				
Gmail Essentials 2015							•		•	•		
Going Green with BIM and GIS	•	•				•						
Going Grey: Designing for an Ageing Society	•											
Good Housekeeping: Everyone's Responsibility							•	•				
Good Housekeeping: Keeping Your Workplace Safe							•	•				
Google Docs: 01-Getting Started, Document Fundamentals, Document Formatting and Customization in Google Documents									•	•		
Google Docs: 02-Working with Tables, Proofing, Navigation Techniques and Document Distribution in Google Documents									•	•		
Google Spreadsheets: 01-Getting Started, Spreadsheet Fundamentals and Beyond the Basics in Google Spreadsheets									•	•		
Google Spreadsheets: 02-Enhancing Spreadsheets, Spreadsheet Organization & Optimization and Spreadsheet Distribution in Google Spreadsheets									•	•		
Gravel Road Design, Construction & Maintenance						•						
Green Building Envelope Design	•	•			•	•						
Green Building Materials: An Introduction	•	•			•	•						
Green Building Materials: Product Selection & Specification	•	•			•	•						
Green Building Technology for Home Inspectors		•										
Green Building with Steel - Part 2: Guidelines for Builders, Trades and Inspectors	•	•				•						
Green Building with Steel - Part 3: Light Gauge Metal Components for Framing	•	•				•						
Green Building with Steel - Part 4: Framing With Steel Studs	•	•				•						
Green Building with Steel - Part 5: Erecting An Engineered Red Iron Steel House	•	•				•						
Green Building: Commercial High Performance Guidelines Part 1	•	•			•	•	•					
Green Building: Commercial High Performance Guidelines Part 2	•	•			•	•	•					
Green Design: Biophilia and the Human Affinity for Nature	•	•			•	•						
Green Design: Brownfield Redevelopment		•										
Green Design: Brownfield Redevelopment (RV-10900)	•				•	•						
Green Design: Economics of Green Building	•	•			•	•	•					
Green Design: Introduction to High Performance Building Design (Based on LEED v4)	•	•			•	•	•					
Green Design: Introduction to Indoor Environmental Air Quality (Based on LEED v4)	•	•			•	•	•					
Green Design: Introduction to Sustainability and Measurement Systems (Based on LEED v4)	•	•			•	•	•					
Green Design: Introduction to Sustainable Design Materials and Resources (Based on LEED v4)	•	•			•	•	•					
Green Design: Introduction to Sustainable Sites (Based on LEED v4)	•	•			•							
Green Design: Introduction to Sustainable Water Systems (Based on LEED v4)	•	•			•	•	•					
Green Design: Sustainability and Historic Preservation	•	•			•	•						
Green Design: Sustainable Daylighting Design (Based on LEED v4)	•	•			•	•	•					
Green Design: Sustainable Lighting Design (Based on LEED v4)	•	•			•	•	•					
Green Design: The Ethics of Green Design	•	•			•							
Green Infrastructure 1: Introduction to High Performance Guidelines	•	•			•	•						
Green Infrastructure 2: Best Practices for Site Assessment	•	•			•	•						
Green Infrastructure 3: Best Practices for Streetscape	•	•			•	•						
Green Infrastructure 4: Best Practices for Pavement	•	•			•	•						
Green Infrastructure 5: Best Practices for Utilities	•	•			•	•						
Green Infrastructure 6: Best Practices for Stormwater Management	•	•			•	•						
Green Infrastructure 7: Best Practices for Landscape	•	•			•	•						
Green Infrastructure 8: Best Practices For Construction	•	•			•	•						
Green Landscape Design: Reducing the Urban Heat Island Effect	•				•		•					
Green Landscape Design: Water Conservation in the Landscape	•				•							
Green Street Retrofit	•	•				•						
Green Streets	•	•			•	•						
Green Urban Design	•	•			•	•						
Ground Fault Circuit Interrupters							•					
Grounding							•					
Guide to the FEMA Elevation Certificate V2						•						
Hacker / Security+ (SY0-401): Advanced Exploitation Techniques									•			
Hacker / Security+ (SY0-401): Authentication Systems									•			
Hacker / Security+ (SY0-401): Buffer Overflows									•			



	Architecture & Design	Construction Project Management	Construction & Trade	Cybersecurity Awareness	EIT Success	Engineering	Facilities Management & Maintenance	Health, Safety, Environment Premium	IT & Security	Professional Development	Project Management	Workplace Essentials
Hacker / Security+ (SY0-401): Covering Tracks									•			
Hacker / Security+ (SY0-401): Cross-Site Scripting									•			
Hacker / Security+ (SY0-401): Cryptography									•			
Hacker / Security+ (SY0-401): Cryptography Weaknesses									•			
Hacker / Security+ (SY0-401): Denial of Service									•			
Hacker / Security+ (SY0-401): Disaster Recovery and Risk Management									•			
Hacker / Security+ (SY0-401): Evading Firewalls and Honey pots									•			
Hacker / Security+ (SY0-401): Evading IDS									•			
Hacker / Security+ (SY0-401): Hacking Web and App Servers									•			
Hacker / Security+ (SY0-401): Hacking Wireless Networks									•			
Hacker / Security+ (SY0-401): Introduction to Ethical Hacking									•			
Hacker / Security+ (SY0-401): Mobile Hacking Basics									•			
Hacker / Security+ (SY0-401): Penetration Testing									•			
Hacker / Security+ (SY0-401): Physical Security									•			
Hacker / Security+ (SY0-401): Port Scanning									•			
Hacker / Security+ (SY0-401): Scanning Networks									•			
Hacker / Security+ (SY0-401): Session Hijacking									•			
Hacker / Security+ (SY0-401): Sniffers									•			
Hacker / Security+ (SY0-401): Social Engineering									•			
Hacker / Security+ (SY0-401): Spyware & Keyloggers									•			
Hacker / Security+ (SY0-401): SQL Injections									•			
Hacker / Security+ (SY0-401): System Hacking									•			
Hacker / Security+ (SY0-401): Trojans and Backdoors									•			
Hacker / Security+ (SY0-401): Viruses and Worms									•			
Hacker / Security+ (SY0-401): Vulnerability Assessment									•			
Hacker / Security+ (SY0-401): Wireless Types and Vulnerabilities									•			
Hacker: Banner Grabbing									•			
Hacker: Cloud Computing-Attacks									•			
Hacker: Cloud Computing-Concepts									•			
Hacker: Configuring Linux for Pentesting									•			
Hacker: Enumeration									•			
Hacker: Footprinting									•			
Hacker: Linux Fundamentals									•			
Hacker: Reconnaissance									•			
Hacker: Test Me Exam									•			
Hand & Power Tool Safety							•	•				
Hand and Power Tools								•				
Hand Safety						•	•	•				
Hand Tools, Part 1							•					
Hand Tools, Part 2							•					
Hand Washing and Hygiene								•				
Handling, Placing and Finishing Concrete	•	•	•	•	•							
Hazard Communication GHS								•				
Hazard Communication in Healthcare Facilities							•	•				
Hazard Communication in the Hospitality Industry							•	•				
Hazard Communications for Restaurants							•	•				
Hazardous Material Classifications								•				
Hazardous Material Labeling								•				
Hazardous Material Labels							•	•				
Hazardous Material Storage								•				
Hazardous Waste Essentials		•	•	•	•	•	•	•				
Hazardous Waste: Treatment		•	•	•	•	•	•	•				
Hazmat Transportation Safety Awareness							•	•				
HAZWOPER 8 Hour Refresher							•	•				
HAZWOPER 8 Hour Refresher with ID Card								•				
HAZWOPER: Awareness								•				
HAZWOPER: Operations								•				
Health Effects Caused by Mold		•					•	•				
Healthy Practices: Nutrition, Exercise, and Safety								•				
Hearing Conservation								•				
Heat Exchanger Basics							•					
Heat Exchangers: Condensers and Reboilers							•					
Heat Exchangers: Cooling Towers							•					
Heat Exchangers: Introduction							•					
Heat Exchangers: Operation of Shell and Tube Types							•					
Heat Safety Awareness							•	•				
Heat Stress Causes								•				



	Architecture & Design	Construction Project Management	Construction & Trade	Cybersecurity Awareness	EIT Success	Engineering	Facilities Management & Maintenance	Health, Safety, Environment Premium	IT & Security	Professional Development	Project Management	Workplace Essentials
Heat Stress Symptoms and Prevention								•				
Heavy Construction Equipment Basics - Earthmoving & Excavating			•	•								
Heavy Construction Equipment Basics - Lifting			•	•								
Heavy Equipment Safety Introduction								•				
Heavy Equipment Visibility								•				
HEC-RAS - Open Channel Flow Basics						•						
Helical Foundations & Tiebacks: An Introduction						•						
HEPA High Efficiency Filters			•				•					
Hexavalent Chromium								•				
High Performance Landscapes: Protecting and Restoring Soil Health in Urban Landscapes	•					•						
Highway Engineering: Contracts and Supervision				•	•	•						
Highway Engineering: Highway Drainage and Surveys				•	•	•						
Highway Engineering: Highway Traffic Engineering				•	•	•						
Highway Engineering: Part 1 - Highway Materials, Maintenance and Rehabilitation				•	•	•						
Highway Engineering: Part 2 - Highway Materials, Maintenance and Rehabilitation				•	•	•						
Highway Rumble Strips				•	•	•						
HIPAA							•	•				
HIPAA Rules and Compliance							•	•				
Hiring Practices									•			
Historic Preservation: An Introduction	•	•										
Historic Preservation: Concrete and Terra-Cotta	•	•										
Historic Preservation: Energy Conservation	•	•				•						
Historic Preservation: Exterior Additions and Substitutions	•	•										
Historic Preservation: Rehabilitating Interiors	•	•										
Historic Preservation: Roofing for Historic Buildings	•	•										
Hojas de datos de seguridad (Safety Data Sheets)							•	•				
Hospitality Security: The Basics							•	•				
Hot Work Safety								•				
Hot-Dip Galvanizing: Corrosion Protection (3 hours)			•			•						
Hotel Security: Handling Modern Threats							•	•				
HTML and CSS for Beginners with HTML5									•			
HTML5 Mobile App Development									•			
Hurricane Damage Investigations - Wind vs. Water	•					•						
Hurricane Damage: Wind vs. Water Determination						•						
Hurricane Mitigation Techniques and Inspection			•									
Hurricane Mitigation: Design and Construction Lessons	•					•						
HVAC - Heating and Cooling							•					
HVAC - Hot Water and Ventilation							•					
HVAC Acoustics	•	•				•	•					
HVAC Basics							•					
HVAC Design			•	•			•					
HVAC Distribution			•	•			•					
HVAC HEPA Filters			•	•			•					
HVAC Refrigeration Essentials	•	•	•	•	•	•	•					
HVAC System Controls			•	•	•	•	•					
HVAC System Fans			•	•	•	•	•					
HVAC Terminal Units						•	•					
Hydraulic Accumulators - An Introduction				•	•							
Hydraulic Design of Storm Sewers	•	•				•						
Hydraulic Fluid Safety								•				
Hydraulic Motor Selection for Industrial Conveyors				•	•							
Hydraulic Motor Speed Control & Regulation				•	•							
Hydraulic Steel Structure Design				•	•							
Hydraulic Systems							•					
Hydraulics: Actuators							•					
Hydraulics: Component Inspection and Replacement							•					
Hydraulics: Diagrams							•					
Hydraulics: Fluid and Reservoirs							•					
Hydraulics: Principles and Circuits							•					
Hydraulics: Pumps							•					
Hydraulics: Routine Maintenance							•					
Hydraulics: Troubleshooting							•					
Hydraulics: Valves, Part 1							•					
Hydraulics: Valves, Part 2							•					
Hydroelectric Power Generation						•	•					
Hydrogen Sulfide Awareness								•				
Hydrogen Sulfide Safety								•				



	Architecture & Design	Construction Project Management	Construction & Trade	Cybersecurity Awareness	EIT Success	Engineering	Facilities Management & Maintenance	Health, Safety, Environment Premium	IT & Security	Professional Development	Project Management	Workplace Essentials
IAQ: Humid Climate Issues												
IICRC 7 Hour Indoor Air Quality (IAQ) Program	•		•			•	•					
Impacts of the 2010 ADA Guidelines	•		•		•	•						
Implementing Server 2012 (70-414): 01-Managing and Maintaining a Server Infrastructure										•		
Implementing Server 2012 (70-414): 02-Planning and Implementing a Highly Available Enterprise Infrastructure										•		
Implementing Server 2012 (70-414): 03-Planning and Implementing a Server Virtualization Infrastructure										•		
Implementing Server 2012 (70-414): 04-Designing and Implementing Identity and Access Solutions										•		
Implementing Server 2012 (70-414): Show Me-Designing and Implementing Identity and Access Solutions										•		
Implementing Server 2012 (70-414): Show Me-Managing and Maintaining a Server Infrastructure										•		
Implementing Server 2012 (70-414): Show Me-Planning and Implementing a Highly Available Infrastructure										•		
Implementing Server 2012 (70-414): Show Me-Planning and Implementing a Server Virtualization Infrastructure										•		
Implementing Server 2012 (70-414): Test Me-Microsoft Exam 70-414										•		
Improving Work Habits: 01-Performance Issue or Poor Work Habit?										•		
Improving Work Habits: 02-Describing the Work Habit										•		
Improving Work Habits: 03-Keep Ownership with the Team Member										•		
Improving Work Habits: 04-How Would You Empathize?										•		
Improving Work Habits: 05-Your Path to Improving Work Habits										•		
Improving Work Habits: 06-Mastering Improving Work Habits										•		
Improving Work Habits: 07-Improving Work Habits Health Check										•		
Incident Reporting and Investigation							•	•				
Incineration Systems: Air Emission Controls							•	•				
Increasing Building Energy Efficiencies: Policies and Practice	•				•	•	•					
Indoor Air Quality: Introduction, Diagnosing & Mitigating			•		•	•	•					
Inductors, Part 1							•					
Inductors, Part 2							•					
Industrial Pneumatic Technology: Aftercoolers, Driers, and Receivers							•					
Industrial Pneumatic Technology: Air Preparation							•					
Industrial Pneumatic Technology: Check Valves, Cylinders, and Motors							•					
Industrial Pneumatic Technology: Compressors							•					
Industrial Pneumatic Technology: Control of Pneumatic Energy							•					
Industrial Pneumatic Technology: Directional Control Valves							•					
Industrial Pneumatic Technology: Energy Transmission							•					
Industrial Pneumatic Technology: Excess Flow Valves, Boosters, and Sequence Valves							•					
Industrial Pneumatic Technology: Force Transmission							•					
Industrial Switches							•					
Infrastructure 101: Repairing Pandora's Box			•			•						
Ingreso a espacios reducidos (Confined Space Entry)							•	•				
Injury Prevention in Restaurants and Food Service							•	•				
Inland Wetland Restoration												
Innovative Heat Pump Technology	•		•			•	•					
Inspecting for & Filling Out the 4-Point Form			•									
Installing Server 2012 (70-410): 01-Installing and Configuring Windows Server 2012										•		
Installing Server 2012 (70-410): 02-Configuring Server Roles and Features										•		
Installing Server 2012 (70-410): 03-Configuring Hyper-V										•		
Installing Server 2012 (70-410): 04-Deploying and Configuring Core Network Services										•		
Installing Server 2012 (70-410): 05-Installing and Administering Active Directory										•		
Installing Server 2012 (70-410): 06-Configuring and Managing Group Policies in Active Directory										•		
Installing Server 2012 (70-410): Show Me-Configuring Hyper-V										•		
Instrumentation and Control: Detectors & Position Indicators							•	•				
Instrumentation and Control: Process Controls							•	•				
Insulators							•					
Insurance Coverage Disputes			•									
Interior Lighting for Designers: Daylight and Filament Sources	•											
Interior Lighting for Designers: Design Factors	•											
Interior Lighting for Designers: Interior Illuminations	•											
Interior Lighting for Designers: Low- and High-Intensity Discharge Sources	•											
Interior Lighting for Designers: Solid-State Lighting and Auxiliary Equipment	•											
International Building Code & More: About the Codes	•	•		•	•							
International Building Code & More: Code Officials and Code Processes	•	•		•	•							
International Building Code & More: Construction Types and Building Sizes	•	•		•	•	•						
International Building Code & More: Family Residences, Existing Structures and Historic Buildings	•	•		•	•							
International Building Code & More: Finish and Furniture Selection	•	•		•	•							
International Building Code & More: Fire Protection Systems	•	•										
International Building Code & More: Means of Egress	•	•		•	•	•						
International Building Code (IBC) - Assembly Spaces	•	•		•	•	•						
International Building Code (IBC) - Care Facilities Provisions	•	•		•	•							
International Building Code Significant Changes to 2012 Edition	•	•		•	•	•						



	Architecture & Design	Construction Project Management	Construction & Trade	Cybersecurity Awareness	EIT Success	Engineering	Facilities Management & Maintenance	Health, Safety, Environment Premium	IT & Security	Professional Development	Project Management	Workplace Essentials
International Engineering						•						
International Snapshot on Sustainable Infrastructure	•		•			•						
Internet and Computer Policy									•			
Interpersonal Communication										•		
Interviewing Skills for Employees									•			
Interviewing Skills for Managers: Conducting an Interview									•			
Interviewing the Right Way									•	•		•
Intro to SharePoint							•		•	•		
Introduction to ASHRAE 189.1-2011: Standard for the Design of High-Performance Green Buildings Except Low-Rise Residential Buildings	•	•		•	•	•						
Introduction to ASHRAE 55-1992: Thermal Environmental Conditions for Human Occupancy		•		•	•	•						
Introduction to ASHRAE 62.1-2010: Ventilation for Acceptable Indoor Air Quality	•	•		•	•	•						
Introduction to ASHRAE 90.1-2010: Energy Standard for Buildings Except for Low Rise Residential Buildings	•	•		•	•	•						
Introduction to Basic Diagrams and Symbols, Part 1						•						
Introduction to Basic Diagrams and Symbols, Part 2						•						
Introduction to Co-locating Systems	•	•				•						
Introduction to Electronic Component Packages						•						
Introduction to FEMA Flood Maps and Flood Studies	•	•		•	•							
Introduction to Net Zero Buildings	•	•		•	•							
Introduction to Photovoltaics	•	•		•	•							
Introduction to Rain Gardens	•											
Introduction to Sustainable Design and Construction Using Green Globes	•	•		•	•							
Introduction to Sustainable Roof Technologies	•	•			•							
Introduction to the ISI Envision Rating System	•	•		•	•							
Introduction to Wetlands	•	•		•	•							
Introduction to Windows 8									•			
Inventory Management for Engineers						•						
Ionizing Radiation							•	•				
Irrigation Practices for Commercial and Residential Sites	•											
Irritants, Corrosives and Sensitizers								•				
IT Pro to Manager: 01-Managing the Development of Technical Professionals									•		•	
IT Pro to Manager: 02-Successful Communication and Process Management Skills									•		•	
IT Pro to Manager: 03-Developing Leadership and Transitioning into Management									•		•	
ITIL® Foundation: 01-Introduction									•			
ITIL® Foundation: 02-Service Strategy									•			
ITIL® Foundation: 03-Service Design									•			
ITIL® Foundation: 04-Service Transition									•			
ITIL® Foundation: 05-Service Operation									•			
ITIL® Foundation: 06-Continual Service Improvement									•			
ITIL® Foundation: Test Me-ITIL® Foundation									•			
It's my Job! Career Growth									•			
Janitorial Safety							•	•				
Java Programming for Beginners									•			
Javascript for Beginners									•			
Job Hazard Analysis (JHA) Safety Task Review							•	•				
Job Safety Analysis								•				
jQuery for Beginners									•			
Killer Bees Wasps And Spiders							•	•				
Kirchhoff's Laws							•	•				
Kitchen Safety							•	•				
Lab Safety: Electrical Safety in the Laboratory								•				
Lab Safety: Flammables & Explosives in the Laboratory								•				
Lab Safety: GHS Safety Data Sheets in the Laboratory								•				
Lab Safety: Handling Compressed Gas Cylinders in the Laboratory								•				
Lab Safety: Laboratory Ergonomics								•				
Lab Safety: Laboratory Hoods								•				
Lab Safety: Orientation to Laboratory Safety								•				
Lab Safety: OSHA Formaldehyde Standard								•				
Lab Safety: Planning for Laboratory Emergencies								•				
Lab Safety: Preventing Contamination in the Laboratory								•				
Lab Safety: Safe Handling of Laboratory Glassware								•				
Lab Safety: Safety Showers & Eye Washes in the Laboratory								•				
Laboratory Safety								•				
Ladder Safety							•	•				
Land Development Projects: Design of Infrastructure	•	•		•	•							
Land Development Projects: Developing Feasibility Studies	•	•		•	•							
Land Development Projects: Grading and Drainage Design	•	•		•	•							
Landfill Gas Collection and Treatment Systems						•						







	Architecture & Design	Construction Project Management	Construction & Trade	Cybersecurity Awareness	EIT Success	Engineering	Facilities Management & Maintenance	Health, Safety, Environment Premium	IT & Security	Professional Development	Project Management	Workplace Essentials
Managing Complaints: 02-Handling Complaints Using Active Listening									•			
Managing Complaints: 03-Your Path to Managing Complaints									•			
Managing Complaints: 04-Mastering Managing Complaints									•			
Managing Complaints: 05-Managing Complaints Health Check									•			
Managing Contractors and Temporary Employees		•							•	•	•	
Managing Generation X		•							•	•	•	
Managing Stress at Work									•	•	•	
Managing Technical Professionals									•	•	•	
Managing Up: Strengthening Business Relationships									•			
Managing Yourself										•		
Manholes - Head Loss and Sizing						•						
Manufacturing and Specifying of Clay Brick Masonry			•			•						
Mastering Excel 2016							•		•	•		
Mastering Excel 2016, Basics							•		•	•		
Mastering Excel 2016, Intermediate							•		•	•		
Mastering Office 365							•		•	•		
Mastering Outlook 2016							•		•	•		
Mastering Outlook 2016 Advanced							•		•	•		
Mastering Outlook 2016 Basics							•		•	•		
Mastering PowerPoint 2016							•		•	•		
Mastering PowerPoint 2016 Advanced							•		•	•		
Mastering PowerPoint 2016 Basics							•		•	•		
Mastering QuickBooks Online							•		•	•		
Mastering Word 2016							•		•	•		
Mastering Word 2016 Advanced							•		•	•		
Mastering Word 2016, Basics							•		•	•		
Mastering Word 2016, Intermediate							•		•	•		
Material Handling: Tank Trucks								•				
Material Science: Properties of Metals						•						
Material Science: Structures of Metals						•						
Math: Basics							•					
Mathematics I: Algebra	•		•			•						
Measuring Current, Voltage, and Resistance							•					
Mechanical Characteristics of Conductors			•			•						
Mechanical Power Press Safety								•				
Mechanical Science: Heat Exchangers					•	•						
Mechanical Seals							•					
Medical Waste Stream: Identification and Handling						•		•				
Medium Voltage Underground Cables			•			•						
Meetings That Get Results									•			
Membrane Filtration - Part 1: Process, Products & Materials						•						
Membrane Filtration - Part 2: System Components & Pumps						•						
Membrane Filtration - Part 3: Plant Functions and Pretreatment Methods						•						
Membrane Filtration - Part 4: Cleaning, Measuring, Controls and Pumps						•						
Mentoring that Matters									•	•	•	
Metal on Metal Safety								•				
Metes & Bounds Surveys: An Essential Review						•						
Microgrid Essentials			•		•	•	•					
Microgrids and the City					•	•	•					
Microsoft Lync Essentials							•		•	•		
Microsoft Project 2013 Essentials Training	•	•			•		•		•	•		
Microsoft Project 2013 Intermediate Training		•			•		•		•	•		
Microsoft Project 2016 Essentials Training	•	•			•		•		•	•		
Microsoft Project 2016 Intermediate Training	•	•			•		•		•	•		
Microsoft Sway Essentials							•		•	•		
Minimum Standards and Practices for Florida Mold Assessors and Remediators			•									
Minimum Standards for Arkansas Land Surveyors						•						
Minimum Technical Standards for Georgia Land Surveyors						•						
Minimum Technical Standards for Louisiana Land Surveyors (1 hour)						•						
Minimum Technical Standards for New Mexico Land Surveyors						•						
Mississippi Standards of Practice for Surveying						•						
Mobile Game Development for iOS									•			
Modern Environmental Laws					•							
Modern React with Redux									•			
Modern Roundabout Design: Designing Safe Intersections	•				•	•						
Modern Sewer Design: Durability Guidelines for Corrugated Steel Pipe					•							
Modern Shale Gas Development			•		•	•						



	Architecture & Design	Construction Project Management	Construction & Trade	Cybersecurity Awareness	EIT Success	Engineering	Facilities Management & Maintenance	Health, Safety, Environment Premium	IT & Security	Professional Development	Project Management	Workplace Essentials
Mold Awareness and Prevention												
Mold Basics			•		•		•					
Mold Contractors' Standard of Care			•									
Mold Documentation and Report Preparation			•									
Mold Remediation			•				•	•				
Mold Remediation Equipment			•				•					
Mold Remediation in Schools & Commercial Buildings							•					
Mold Reporting for Mold Assessment and Mold Remediation Projects			•									
Mold Safety and Health			•				•	•				
Mold Sampling			•				•					
Montana 4 Hour 2017 NEC Changes: Program 1						•						
Montana 4 Hour 2017 NEC Changes: Program 2						•						
Montana Electrician 4 Hour Industry Related Program 2						•						
More Than Mold - Health Effects Associated With Mold and Water Damage			•				•	•				
Motivating Employees									•			
Motor Branch Circuit Protection							•					
Mounting and Dismounting Heavy Equipment								•				
Movement Joints in Brick Masonry	•		•			•						
Multigeneration Management: 01-Workforce Generations		•							•	•	•	
Multigeneration Management: 02-Leading Silents and Boomers		•							•	•	•	
Multigeneration Management: 03-Multi-Generational Leadership (GenX and Next)		•							•	•	•	
Multigeneration Management: 04-Cross-Generational Teams		•							•	•	•	
Multigeneration Management: 05-Developing Generations		•							•	•	•	
Multistage Centrifugal Pump Maintenance						•	•					
Nanotechnology and Sustainability	•		•			•						
Natural Gas Systems - Sizing and Design Consideration			•			•	•					
NCBEEC Laws and Rules - General Statutes of NC & Title 21 NCAC 18B V.13			•									
Negativity in the Workplace		•							•	•	•	
Network+ N10-006: 01-TCP/IP Fundamentals									•			
Network+ N10-006: 02-Network Infrastructure Services									•			
Network+ N10-006: 03-Understanding Network Devices									•			
Network+ N10-006: 04-Cables, Connectors, and Standards									•			
Network+ N10-006: 05-Understanding WAN Connections and Remote Access									•			
Network+ N10-006: 06-Monitoring and Maintaining Networks									•			
Network+ N10-006: 07-Installing, Configuring, and Maintaining Wireless LANs									•			
Network+ N10-006: 08-Network Security									•			
Network+ N10-006: 09-Networking Concepts and Theory									•			
Network+ N10-006: 10-Troubleshooting Networks									•			
Network+ N10-006: 11-LAN Infrastructures									•			
Network+ N10-006: 12-Advanced Networking Concepts									•			
Network+ N10-006: Test Me-CompTIA Exam Network+									•			
Network+ N10-007: 01-TCP/IP Fundamentals									•			
Network+ N10-007: 02-Network Infrastructure Services									•			
Network+ N10-007: 03-Understanding Network Devices									•			
Network+ N10-007: 04-Cables, Connectors, and Standards									•			
Network+ N10-007: 05-Understanding WAN Connections and Remote Access									•			
Network+ N10-007: 06-Monitoring and Maintaining Networks									•			
Network+ N10-007: 07-Installing, Configuring, and Maintaining Wireless LANs									•			
Network+ N10-007: 08-Network Security									•			
Network+ N10-007: 09-Networking Concepts and Theory									•			
Network+ N10-007: 10-Troubleshooting Networks									•			
Network+ N10-007: 11-LAN Infrastructures									•			
Network+ N10-007: 12-Advanced Networking Concepts									•			
Network+ N10-007: Test Me-CompTIA Exam Network+									•			
New Building Technologies Series: Passive Solar Building Technology	•		•		•	•	•					
New Building Technologies Series: Smart Building Technology	•		•		•	•	•					
New Building Technologies Series: Smart Lighting Technology	•		•		•	•	•					
New Employee Safety Orientation							•	•				
New York City Guidelines on Assessment & Remediation of Fungi in Indoor Environments						•						
NFPA 70E Introduction								•				
NFPA 70E® - 2018 Updates	•		•		•	•	•	•				
Night Shift Safety								•				
Nitrogen Safety Awareness								•				
Norovirus: Facts & Prevention							•	•				
North Carolina 2 Hour 2017 NEC Changes: A New Process and Five New Articles and General Requirements	•					•						
North Carolina 2 Hour 2017 NEC Changes: Hazardous Locations and Special Occupancies	•					•						
North Carolina 2 Hour 2017 NEC Changes: Overcurrent Protection, Grounding & Bonding, and Enclosure Boxes						•						



	Architecture & Design	Construction Project Management	Construction & Trade	Cybersecurity Awareness	EIT Success	Engineering	Facilities Management & Maintenance	Health, Safety, Environment Premium	IT & Security	Professional Development	Project Management	Workplace Essentials
North Carolina Mapping Requirements						•						
NPDES Wastewater Discharge Permits								•				
Occupational Safety Training: Bloodborne Pathogens							•	•	•			•
Occupational Safety Training: Electrical Safety							•	•	•			
Occupational Safety Training: Emergency Action Plans							•	•	•	•		•
Occupational Safety Training: Ergonomics in the Workplace							•	•	•	•		•
Occupational Safety Training: Fall Protection							•	•	•	•		
Occupational Safety Training: Fire Safety and Prevention							•	•	•	•		
Occupational Safety Training: Flammable and Combustible Liquids							•	•	•			
Occupational Safety Training: Hazard Communication							•	•	•	•		
Occupational Safety Training: Hazardous Materials							•	•	•			
Occupational Safety Training: Introduction to Industrial Hygiene							•	•	•			
Occupational Safety Training: Introduction to OSHA							•	•	•			
Occupational Safety Training: Lockout/Tagout							•	•	•			
Occupational Safety Training: Machine Guarding							•	•	•			
Occupational Safety Training: Personal Protective Equipment							•	•	•	•		
Occupational Safety Training: Respiratory Protection							•	•	•			
Occupational Safety Training: Safety and Health Programs							•	•	•			
Occupational Safety Training: Slips, Trips, and Falls							•	•	•	•		•
Occupational Safety Training: Walking and Working Surfaces							•	•	•			
Office 365 Essentials							•		•	•		
Office 365 Groups Essentials							•		•	•		
Office 365 Planner Essentials							•		•	•		
Ohm's Law							•					
Oil Spill Responses in Facilities								•				
OJT Mentor										•		
Oklahoma 6 Hour 2017 NEC Changes Program						•						
OneDrive Essentials (2016)							•		•	•		
Open Channel Hydraulics I: Introduction and Energy Balance						•						
Open Channel Hydraulics II: Force Balance and Critical Depth						•						
Open Channel Hydraulics III: Uniform Flow						•						
Open Channel Hydraulics IV: Introduction to Water Surface Profiles						•						
Open Channel Hydraulics V: More Water Surface Profiles						•						
Operación segura de montacargas (Safe Forklift Operation)							•	•				
Operating an AED								•				
Operator Responsibilities: Plant Production and Safety							•					
Oracle 10g Administration I (1Z0-042)									•			
Oracle 10g Administration II (1Z0-043)									•			
Oracle 10g Application Server Administration II (1Z0-312)									•			
Oracle 10g Introduction to SQL (1Z0-047)									•			
Oracle 11g Administration II (1Z0-053)									•			
Oracle 11g DBA Administration I (1Z0-052)									•			
Oracle 11g PL/SQL Developer Program Units (1Z0-144)									•			
Oracle 11g PL/SQL Fundamentals									•			
Oracle 11g SQL Fundamentals I (1Z0-051)									•			
Oregon 2017 NEC Changes: A New Process and 5 New Articles and General Requirements						•						
Oregon 2017 NEC Changes: Hazardous Locations and Special Occupancies						•						
Oregon 2017 NEC Changes: Overcurrent Protection, Grounding & Bonding, and Enclosure Boxes						•						
Oregon Electrician 2017 NEC Changes: Appliances and Equipment - Special Equipment						•						
Oregon Electrician 2017 NEC Changes: Conductors and Wiring Methods - Receptacles and Switches						•						
Orientación a la seguridad (Safety Orientation)							•	•				
OSHA 10 Hour Construction Program					•							
OSHA Concrete and Masonry Construction								•				
OSHA Demolition								•				
OSHA Electrical General Requirements								•				
OSHA Electrical Regulations								•				
OSHA Electrical Wiring Methods								•				
OSHA Fatal Accidents & Prevention								•				
OSHA Fire Protection & Prevention								•				
OSHA Pressure Vessel Chemical Cracking								•				
OSHA Recordkeeping: General Recording Criteria								•				
OSHA Safety: Drilling								•				
OSHA Safety: Introduction to Powered Industrial Trucks								•				
OSHA Safety: Stairways and Ladders							•	•				
OSHA Signs, Signals & Barricades								•				
OSHA Standards on Steel Erection								•				
OSHA Standards: Bloodborne Pathogens							•	•				







	Architecture & Design	Construction Project Management	Construction & Trade	Cybersecurity Awareness	EIT Success	Engineering	Facilities Management & Maintenance	Health, Safety, Environment Premium	IT & Security	Professional Development	Project Management	Workplace Essentials
PM: 01-Project Management Overview		•							•		•	
PM: 02-Managing Projects within Organizations		•							•		•	
PM: 03-Project Management Process Groups		•							•		•	
PM: 04-Execution, Monitoring and Controlling		•							•		•	
PM: 05-Project Change Control and Closure		•							•		•	
PM: 06-Initiation Basics, Developing a Project Charter and Project Management Plan		•							•		•	
PM: 07-Collecting Requirements and Defining Scope		•							•		•	
PM: 08-Monitor and Control Project Scope		•							•		•	
PM: 09-Defining and Sequencing Project Activities		•							•		•	
PM: 10-Developing and Controlling the Project Schedule		•							•	•	•	
PM: 11-Estimating Activity Resources and Durations		•							•		•	
PM: 12-Controlling Costs		•							•		•	
PM: 13-Estimating & Budgeting Project Costs		•							•		•	
PM: 14-Project Quality Planning		•							•		•	
PM: 15-Quality Assurance and Cost Control		•							•		•	
PM: 16-Managing Projects for Human Resources		•							•		•	
PM: 17-Planning Projects for Human Resources		•							•		•	
PM: 18-Processes for Managing Project Communications		•							•		•	
PM: 19-Stakeholders and the Communication Management Plan		•							•		•	
PM: 20-Identifying Project Risks		•							•		•	
PM: 21-Performing Risk Analysis		•							•		•	
PM: 22-Risk Management Planning		•							•		•	
PM: 23-Risk Response, Monitor and Control		•							•		•	
PM: 24-Managing Procurement During Your Project		•							•		•	
PM: 25-Planning Procurement for Your Project		•							•		•	
PM: 26-Stakeholder Identification and Planning		•							•		•	
PM: 27-Project Stakeholder Engagement and Communication		•							•		•	
PM: 28-Project Management Professional (PMP)® 2016 Exam Updates		•							•		•	
PM: PMI® Certification Requirements		•							•		•	
PM: Test Me-Project Management Professional (PMP)®		•							•		•	
PMBOK® Guide - Sixth Edition: 01-Project Management Overview	•	•			•		•				•	
PMBOK® Guide - Sixth Edition: 02-Managing Projects within Organizations	•	•			•		•				•	
PMBOK® Guide - Sixth Edition: 03-Project Management Process Groups	•	•			•		•				•	
PMBOK® Guide - Sixth Edition: 04-Execution, Monitoring and Controlling	•	•			•		•				•	
PMBOK® Guide - Sixth Edition: 05-Project Change Control and Closure	•	•			•		•				•	
PMBOK® Guide - Sixth Edition: 06-Initiation Basics, Developing a Project Charter and Project Management Plan	•	•			•		•				•	
PMBOK® Guide - Sixth Edition: 07-Collecting Requirements and Defining Scope	•	•			•		•				•	
PMBOK® Guide - Sixth Edition: 08-Monitor and Control Project Scope	•	•			•		•				•	
PMBOK® Guide - Sixth Edition: 09-Defining and Sequencing Project Activities	•	•			•		•				•	
PMBOK® Guide - Sixth Edition: 10-Developing and Controlling the Project Schedule	•	•			•		•				•	
PMBOK® Guide - Sixth Edition: 11-Estimating Activity Resources and Duration	•	•			•		•				•	
PMBOK® Guide - Sixth Edition: 12-Controlling Costs	•	•			•		•				•	
PMBOK® Guide - Sixth Edition: 13-Estimating & Budgeting Project Costs	•	•			•		•				•	
PMBOK® Guide - Sixth Edition: 14-Project Quality Planning	•	•			•		•				•	
PMBOK® Guide - Sixth Edition: 15-Quality Assurance and Cost Control	•	•			•		•				•	
PMBOK® Guide - Sixth Edition: 16-Managing Projects for Human Resources	•	•			•		•				•	
PMBOK® Guide - Sixth Edition: 17-Planning Projects for Human Resources	•	•			•		•				•	
PMBOK® Guide - Sixth Edition: 18-Processes for Managing Project Communications	•	•			•		•				•	
PMBOK® Guide - Sixth Edition: 19-Stakeholders and the Communication Management Plan	•	•			•		•				•	
PMBOK® Guide - Sixth Edition: 20-Identifying Project Risks	•	•			•		•				•	
PMBOK® Guide - Sixth Edition: 21-Performing Risk Analysis	•	•			•		•				•	
PMBOK® Guide - Sixth Edition: 22-Risk Management Planning	•	•			•		•				•	
PMBOK® Guide - Sixth Edition: 23-Risk Response, Monitor and Control	•	•			•		•				•	
PMBOK® Guide - Sixth Edition: 24-Managing Procurement During Your Project	•	•			•		•				•	
PMBOK® Guide - Sixth Edition: 25-Planning Procurement for Your Project	•	•			•		•				•	
PMBOK® Guide - Sixth Edition: 26-Stakeholder Identification and Planning	•	•			•		•				•	
PMBOK® Guide - Sixth Edition: 27-Project Stakeholder Engagement and Communication	•	•			•		•				•	
PMBOK® Guide - Sixth Edition: Test Me-Project Management Professional (PMP)®	•				•							
Pneumatic Tool Safety								•				
Pneumatics: Basic Pneumatic Control Systems							•					
Pneumatics: Basic Pneumatic Control Systems and Diagrams							•					
Pneumatics: Controllers							•					
Pneumatics: Indicators and Hand-Auto Control Stations							•					
Pneumatics: Pneumatic Instrument Tubing							•					
Pneumatics: Self Balancing Instruments							•					
Pneumatics: Transmitters							•					
Pneumatics: Troubleshooting Pneumatic Instrument Systems							•					



	Architecture & Design	Construction Project Management	Construction & Trade	Cybersecurity Awareness	EIT Success	Engineering	Facilities Management & Maintenance	Health, Safety, Environment Premium	IT & Security	Professional Development	Project Management	Workplace Essentials
Pneumatics: Tuning Pneumatic Control Systems							•					
Pole Structural Loading						•						
Pollution Prevention Best Practices								•				
Portable Loading Ramps								•				
Positive Displacement Pump Basics						•	•					
Positive Displacement Pump Maintenance Basics						•	•					
Post Disaster Recovery and Reconstruction						•						
Power of an Energy Audit	•		•			•						
Power Quality and Reliability							•					
Power Supplies							•					
Power Transmission & Distribution - Basic Equipment and Terminology						•						
Power Transmission and Distribution						•						
Powered Industrial Trucks							•	•				
Powerful Presentations									•			
PowerPoint 2007: 01-Introduction, Navigation, Themes, Slide Masters and Working with Text in PowerPoint 2007									•			
PowerPoint 2013: 01-The Basics of PowerPoint 2013									•			
PowerPoint 2013: 03-Customizing Presentations in PowerPoint 2013									•			
Power-Up Your PowerPoint Presentation							•		•	•		
Precast Concrete Erection Procedures			•			•						
Precipitation, Coagulation & Flocculation: Course 1						•						
Preparing Infrastructure Plans for Roadways			•			•						
Preservación auditiva (Hearing Conservation)							•	•				
Pressure Washing Best Management Practices								•				
Prestressed and Reinforced Concrete: Choosing the Best Method for Your Project	•	•		•	•							
Preventing and Investigating Accidents							•	•				
Preventing Burn Injuries - Restaurants & Food Service							•	•				
Preventing Mold Growth			•				•					
Preventing Slips & Falls for Restaurants							•	•				
Preventing Slips, Trips, & Falls for Retail Stores							•	•				
Preventing The Spread Of Contagious Illness							•	•				
Preventive Maintenance						•	•					
Pricing as a Professional		•								•	•	
Principles of At-Risk Construction Management	•	•		•								
Principles of Design-Build	•	•		•								
Principles of Professional Construction Management	•	•		•								
Printed Circuit Board Basics						•						
Priority of Calls in Boundary Resolution						•						
Problem Solving										•		
Procedure Use and Adherence										•		
Process Safety Management								•				
Process Safety Management (PSM): 1910.119 Overview and Auditing								•				
Process Safety Management (PSM): An Overview								•				
Process Safety Management (PSM): Compliance Audits								•				
Process Safety Management (PSM): Contractors								•				
Process Safety Management (PSM): Emergency Planning & Response								•				
Process Safety Management (PSM): Employee Participation								•				
Process Safety Management (PSM): Hot Work Permits								•				
Process Safety Management (PSM): Incident Investigations								•				
Process Safety Management (PSM): Management of Change								•				
Process Safety Management (PSM): Mechanical Integrity								•				
Process Safety Management (PSM): Operating Procedures								•				
Process Safety Management (PSM): Pre-Startup Safety Review								•				
Process Safety Management (PSM): Process Hazard Analysis								•				
Process Safety Management (PSM): Process Safety Information								•				
Process Safety Management (PSM): Trade Secrets								•				
Process Safety Management (PSM): Training								•				
Professional Liability: Contract Performance Considerations, Part I					•							
Professional Liability: Pre-Construction Considerations					•							
Professional Standard of Care - Proof & Defense					•							
Programming for Absolute Beginners									•			
Project Management Essentials	•	•	•		•	•	•		•	•		•
Project Management: Professional Techniques	•	•			•	•	•					
Project Risk Management		•			•		•					
Project Team Management	•	•	•			•	•					
Property Management Safety - Employee Slips and Falls							•	•				
Property Management Safety - Fire Prevention							•	•				
Property Management Safety - Personal Protective Equipment							•	•				



	Architecture & Design	Construction Project Management	Construction & Trade	Cybersecurity Awareness	EIT Success	Engineering	Facilities Management & Maintenance	Health, Safety, Environment Premium	IT & Security	Professional Development	Project Management	Workplace Essentials
Property Management Safety - Resident Safety							•	•				
Property Management Safety - Resident Slips and Falls							•	•				
Protección contra caídas (Fall Protection)							•	•				
Protección respiratoria (Respiratory Protection)							•	•				
Protecting and Restoring Habitat in Urban Ecosystems	•					•						
Protecting People Against Terrorist Attacks: Chemical, Biological, and Radiological (CBR) Threat Protection		•		•	•	•	•					
Protecting People Against Terrorist Attacks: Design Considerations for Safe Rooms and Shelters	•	•		•	•	•	•					
Protecting People Against Terrorist Attacks: Structural Design Criteria		•		•	•	•	•					
Protecting Water Systems Through Backflow Prevention	•	•				•	•					
Protecting Your Communications System from Transients and Surges						•						
Protecting Your Team Against Workplace Violence							•	•	•	•		•
Protection Against Malware							•		•	•		•
Providing Performance Feedback: 01-The Power of Performance Feedback								•				
Providing Performance Feedback: 02-Providing Verbal Performance Feedback								•				
Providing Performance Feedback: 03-Providing Written Performance Feedback								•				
Providing Performance Feedback: 04-Your Path to Providing Performance Feedback								•				
Providing Performance Feedback: 05-Mastering Providing Performance Feedback								•				
Providing Performance Feedback: 06-Providing Performance Feedback Health Check								•				
Prueba de ajuste correcto del equipo de respiración (Respirator Fit Testing)							•	•				
Psychology of Color	•											
Pumping Stations - Piping, Valves and Hydraulics				•	•	•						
Pumping Stations - Pumps, Motors and Electrical Systems				•	•	•						
Pumps: Fundamentals of Centrifugal Types						•	•					
Pumps: Multistage Centrifugal						•	•					
Pumps: Operation of Centrifugal Types						•	•					
Pumps: Performance and Inspection						•	•					
Pumps: Reciprocating Positive Displacement Types						•	•					
Pumps: Rotary Positive Displacement Types						•	•					
PVC Pipe - Which type should I use?						•						
Python: 01-Introduction to Python									•			
Python: 02-Development, Setup and Deployment (Unix, Windows)									•			
Python: 03-Data Types, Data Structures									•			
Python: 04-Control Flow, Functions, Classes and Object-Oriented Programming									•			
Python: 05-Module, Packages and Importing Modules									•			
Python: 06-IO Handling									•			
Python: 07-Errors and Exceptions									•			
Python: 08-Testing, Debugging, Profiling, and Tuning									•			
Python: 09-Standard Library, Built-In Functions, String and Text Handling									•			
Python: 10-Python Runtime Services and Language Services									•			
Python: 11-Database Access									•			
Python: 12-File and Directory Handling									•			
Python: 13-Threads and Concurrency									•			
Python: 14-OS Services									•			
Python: 15-Network Programming									•			
Python: 16-Internet Protocols and Data Handling									•			
Python: 17-Web Programming									•			
Python: 18-Markup Processing									•			
Python: 19-Program Frameworks									•			
Python: 20-Performance Tuning									•			
Python: 21-Extending and Embedding									•			
Python: Test Me-Python									•			
QuickBooks Essentials 2013							•		•	•		
R & D Chemical Hygiene								•				
R & D Waste Management								•				
Raceways							•					
Radiation Safety								•				
Radon & New Homes		•										
Radon Measurements		•										
RCRA - Emergencies, Inspections, and Training								•				
RCRA - Generator, Container, and Tank Requirements								•				
RCRA - Introduction								•				
RCRA - Preparing for Transportation, Manifesting, and LDR								•				
RCRA - Special Wastes and Other Requirements								•				
RCRA Emergency Response						•	•	•				
RCRA Generators							•					
Reading and Understanding Schematics							•					
Reading Electrical Diagrams, Part 1							•					



	Architecture & Design	Construction Project Management	Construction & Trade	Cybersecurity Awareness	EIT Success	Engineering	Facilities Management & Maintenance	Health, Safety, Environment Premium	IT & Security	Professional Development	Project Management	Workplace Essentials
Reading Electrical Diagrams, Part 2							•					
Realizing Energy Savings			•		•	•	•					
Reasonable Suspicion of Alcohol for Supervisors									•	•		•
Reasonable Suspicion of Drugs and Alcohol for Supervisors								•	•	•		•
Reasonable Suspicion of Drugs for Supervisors								•	•	•		•
Reciprocating Compressors, Part 1							•					
Reciprocating Compressors, Part 2							•					
Red Hat Linux Essentials (RH033)									•			
Red Hat Linux Networking and Security Administration (RH253)									•			
Red Hat Linux System Administration (RH133)									•			
Reducing Risk: Preparing to be an Expert Witness in a Deposition and Trial						•				•		
Refrigeration - Components							•					
Refrigeration - Compressors and Ice Makers							•					
Refrigeration - Cycle							•					
Refrigeration - Piping, Valves, and Water Fountains							•					
Refrigeration - Refrigerants and Properties							•					
Refrigeration - System Troubleshooting							•					
Refrigeration System: Operation							•					
Refrigeration Systems: Basic Concepts							•					
Regenerative Landscape Design: Shelters	•											
Regenerative Landscape Design: Solar Heating & IAQ	•											
Regenerative Landscape Design: Sustainability	•											
Regenerative Landscape Design: Water	•											
Rehabilitation of Water Distribution Systems: Current Technologies						•	•					
Rehabilitation of Water Distribution Systems: Designing Renewal Projects						•	•					
Rehabilitation of Water Distribution Systems: Selecting Rehab Methods						•	•					
Reinforced Concrete Tilt-Up Panels	•	•				•						
Reinforced Masonry Design	•					•						
Reliability Engineering Fundamentals						•	•					
Renewable Energy Fundamentals	•	•		•	•							
Report Writing for Home Inspectors			•									
Residential Green Building: Design, Construction, and Accreditation	•	•				•						
Residential Green Remodeling: Design, Construction, and Certification	•	•				•						
Resistors							•					
Resolving Conflicts: 02-Know Your Conflict Behavior									•			
Resolving Conflicts: 03-Identifying Conflict Behaviors									•			
Resolving Conflicts: 04-Your Path to Resolving Conflicts									•			
Resolving Conflicts: 05-Mastering Resolving Conflicts									•			
Resolving Conflicts: 06-Resolving Conflicts Health Check									•			
Resource Conservation Recovery Act (RCRA): Hazardous Waste Training Requirements								•				
Respirator Basics								•				
Respirator Fit Testing							•	•				
Respirator Medical Evaluation and Fit Testing								•				
Respirators - Voluntary Use								•				
Respiratory Protection							•	•				
Retaining Wall Design - Part 1	•					•						
Retaining Wall Design - Part 2	•	•				•						
Rewarding Peak Performers		•							•	•	•	
Rigging, Part 1							•					
Rigging, Part 2							•					
Rigging: Basic Lifting							•	•				
Rigging: Ladders and Scaffolds							•	•				
Riprap Design						•						
Risk Management for the Design Professional: Advanced	•			•								
Risk Management for the Design Professional: Basic Principles	•			•								
Risk Management for the Design Professional: Intermediate	•			•								
Rivers vs. Lozeau - A Dave Gibson Public Lands - Related Case						•						
Roadway Design: Vertical and Horizontal Alignment						•						
Roller Contact Bearings, Part 1							•					
Rolling Contact Bearings, Part 2							•					
Roofing - Flexible Membrane Edge Design	•	•				•						
Roofing - Flexible Membrane Wind Load Design	•	•				•						
Roofing Materials - Asphalt Shingles	•	•				•						
Roofing Materials - Concrete Tiles	•	•				•						
Roofing Materials - Flexible Membranes	•	•				•						
Rotary Kiln Incineration Systems						•						
Ruby on Rails for Beginners									•			



	Architecture & Design	Construction Project Management	Construction & Trade	Cybersecurity Awareness	EIT Success	Engineering	Facilities Management & Maintenance	Health, Safety, Environment Premium	IT & Security	Professional Development	Project Management	Workplace Essentials
Runoff Analysis using the SCS Method - Part 1						•						
Runoff Analysis using the SCS Method - Part 2						•						
Safe Food Handling							•	•				
Safe Food Handling California Version							•	•				
Safe Forklift Operation							•	•				
Safe Lifting							•	•				
Safe Operation of Scissor & Boom Lifts							•	•				
Safe Work Permits							•	•				
Safety - An Introduction (General Industry)	•					•	•	•				
Safety and Health - Advanced								•				
Safety and Health - Basic								•				
Safety Data Sheets							•	•				
Safety for Office Personnel							•	•	•	•		•
Safety Management							•	•				•
Safety Management: Barrier Analysis								•				
Safety Management: Change Analysis								•				
Safety Management: Emergency Action Plans								•				
Safety Management: Events and Causal Factors Analysis								•				
Safety Management: Floor and Walkway Safety and Auditing								•				
Safety Management: Hot Work Permit								•				
Safety Management: Incident Investigation								•				
Safety Management: Industrial Hygiene Basics								•				
Safety Management: Job Hazard Analysis								•				
Safety Management: Medical and Exposure Records Access								•				
Safety Management: Near Miss Best Practices								•				
Safety Management: OSHA Recordkeeping								•				
Safety Management: Root Cause Analysis								•				
Safety Management: Root Causes of Human Behavior								•				
Safety Management: Safety Inspections and Observations								•				
Safety Management: Slip, Trip, and Fall Prevention Inspections								•				
Safety Management: Task Analysis								•				
Safety Orientation for Nursing							•	•				
Safety Orientation for Restaurants							•	•				
Safety Orientation for Retail							•	•				
Safety Showers and Eye Washes								•				
Safety Valves							•					
Safety: Basics							•	•				
Safety: Electrical							•					
Safety: Electrical Part 1 - Fundamentals, Materials & Equipment Grounding					•		•	•				
Safety: Electrical Part 2 - Hazardous Location, Clearances & Safety Practice							•	•				
Safety: Electrical Part 2 - Hazardous Location, Clearances & Safety Practice (RV-10744)					•							
Safety: Fire Part 1 - Workplace Fire Hazards & Preventing Fires					•		•	•				
Safety: Fire Part 2 - Fire Protection Equipment & Techniques					•		•	•				
Safety: Machine Operation								•				
Safety: Material-Handling							•	•				
Safety: Trades	•	•				•	•	•				
Safety: Welding Part 1 - Gas Cylinders & Oxy-fuel Systems							•	•				
Safety: Welding Part 2 - Equipment Use & Welder Protection							•	•				
Safety: Working with Chemicals					•		•	•				
Seals: Gaskets and Packing							•					
Seawalls and Boat Docks for Home Inspectors			•									
Secrets of the Office Guru							•	•	•	•		
Security Awareness - Management Training (Hospitality)							•	•				
Security Begins At The Front Desk							•	•				
Security+ (SYO-401): Business Continuity									•			
Security+ (SYO-401): Network Design and Security Controls									•			
Security+ (SYO-401): Security Incidents									•			
Security+ (SYO-401): Test Me-CompTIA Exam Security+ (SYO-401)									•			
Security+ (SYO-501): Advanced Exploitation Techniques									•			
Security+ (SYO-501): Authentication Systems									•			
Security+ (SYO-501): Buffer Overflows									•			
Security+ (SYO-501): Business Continuity									•			
Security+ (SYO-501): Covering Tracks									•			
Security+ (SYO-501): Cross-Site Scripting									•			
Security+ (SYO-501): Cryptography									•			
Security+ (SYO-501): Cryptography Weaknesses									•			
Security+ (SYO-501): Denial of Service									•			





	Architecture & Design	Construction Project Management	Construction & Trade	Cybersecurity Awareness	EIT Success	Engineering	Facilities Management & Maintenance	Health, Safety, Environment Premium	IT & Security	Professional Development	Project Management	Workplace Essentials
Security+ (SY0-501): Disaster Recovery and Risk Management									•			
Security+ (SY0-501): Evading IDS									•			
Security+ (SY0-501): Hacking Web and App Servers									•			
Security+ (SY0-501): Hacking Wireless Networks									•			
Security+ (SY0-501): Introduction to Ethical Hacking									•			
Security+ (SY0-501): Mobile Hacking Basics									•			
Security+ (SY0-501): Network Design and Security Controls									•			
Security+ (SY0-501): Penetration Testing									•			
Security+ (SY0-501): Physical Security									•			
Security+ (SY0-501): Port Scanning									•			
Security+ (SY0-501): Scanning Networks									•			
Security+ (SY0-501): Security Incidents									•			
Security+ (SY0-501): Session Hijacking									•			
Security+ (SY0-501): Sniffers									•			
Security+ (SY0-501): Social Engineering									•			
Security+ (SY0-501): Spyware & Keyloggers									•			
Security+ (SY0-501): SQL Injections									•			
Security+ (SY0-501): System Hacking									•			
Security+ (SY0-501): Test Me-CompTIA Exam Security+ (SY0-501)									•			
Security+ (SY0-501): Trojans and Backdoors									•			
Security+ (SY0-501): Viruses and Worms									•			
Security+ (SY0-501): Vulnerability Assessment									•			
Security+ (SY0-501): Wireless Types and Vulnerabilities									•			
Seguridad a la hora de conducir (Driving Safety)							•	•				
Seguridad contra incendios (Fire Safety)							•	•				
Seguridad para la espalda (Back Safety)							•	•				
Seguridad: Conceptos básicos (Safety: Basics)							•	•				
Seismic - Wood Diaphragm Design for Out of Plane Wall Anchorage					•	•						
Seismic Diaphragm Demands					•	•						
Seismic Equivalent Lateral Force Base Shear					•	•						
Selection, Specification and Installation of Safety and Security Barriers and Bollards	•	•			•	•	•					
Self-checking (STAR)										•		
Senior Living Facility Guidelines for Cost Management and Financing	•											
Septic System Design						•						
Sequential vs. Simultaneous Conveyancing						•						
Series B: 2011 NEC Code Changes - Chapter 3 (4 hour)	•	•				•						
Series B: 2011 NEC Code Changes - Chapter 4 (4 hour)	•	•				•						
Series B: 2011 NEC Code Changes - Chapter 5 (4 hour)	•	•				•						
Series B: 2011 NEC Code Changes - Chapter 6 (4 hour)	•	•				•						
Series B: 2011 NEC Code Changes - Chapter 7 & Chapter 8 (4 hour)	•	•				•						
Series B: 2011 NEC Code Changes - Introduction, Chapter 1 & Chapter 2 (4 hour)	•	•				•						
Series Circuits							•					
Series-Parallel Circuits							•					
Server+ (SK0-004): Configuring and Maintaining Storage Systems									•			
Server+ (SK0-004): Configuring Server Operating Systems									•			
Server+ (SK0-004): Installing and Configuring Servers									•			
Server+ (SK0-004): Network Configuration and Administration									•			
Server+ (SK0-004): Server Administration and Maintenance									•			
Server+ (SK0-004): Server Disaster Recovery									•			
Server+ (SK0-004): Server Security Essentials									•			
Server+ (SK0-004): Troubleshooting Server Problems									•			
Server+ (SK0-004): Understanding Servers									•			
Server+ (SK0-004): Understanding Storage Systems									•			
Server+ (SK0-004): Virtual Server Essentials									•			
Server+ SK0-003: Test Me-CompTIA Exam Server+									•			
Server+ SK0-004: Test Me-CompTIA Exam Server+ SK0-004									•			
Set-Up of Engineering Controls for Mold Remediation Projects		•					•					
Seven Basic Quality Tools										•		
Sexual Harassment Awareness										•		
Sexual Harassment Prevention for Employees (AB1825 & AB2053)	•	•	•		•	•	•	•	•	•	•	•
Sexual Harassment Prevention for Managers (AB1825 & AB2053)	•	•	•		•	•	•	•	•	•	•	•
Sexual Harassment Prevention: Quick Refresh	•	•	•		•	•	•	•	•	•	•	•
Sexual Harassment: Respecting the Individual	•			•					•	•		
Shaft Alignment, Part 1							•					
Shaft Alignment, Part 2							•					
Shaft Alignment: Reverse Dial and Laser							•					
Shaft Alignment: Rim and Face							•					



	Architecture & Design	Construction Project Management	Construction & Trade	Cybersecurity Awareness	EIT Success	Engineering	Facilities Management & Maintenance	Health, Safety, Environment Premium	IT & Security	Professional Development	Project Management	Workplace Essentials
Shipping Of Hazardous Material							•	•				
Shop Safety							•	•				
Shoulder Injury Prevention								•				
Signage for Architects, Interior Designers and Landscape Architects	•											
Single-Phase AC Induction Motor Maintenance							•					
Site Engineering for Landscape Architects: Contours, Forms, Interpolation, and Slope	•											
Site Engineering for Landscape Architects: Design and Layout	•											
Site Engineering for Landscape Architects: Designing and Sizing Storm Water Management Systems	•											
Site Engineering for Landscape Architects: Determining Rates and Volumes of Storm Runoff	•											
Site Engineering for Landscape Architects: Estimating Runoff Rates, Volumes, and Required Detention Storage	•											
Site Engineering for Landscape Architects: Grading	•											
Site Engineering for Landscape Architects: Horizontal and Vertical Road Alignment	•											
Site Engineering for Landscape Architects: Soils in Construction and Earthwork	•											
Site Engineering for Landscape Architects: Storm Water Management and Control	•											
Site Engineering for Landscape Architects: Storm Water Management System Components	•											
Site Planning and Design	•	•		•								
Site Utility Design: Commercial Buildings	•	•		•	•	•						
Sizing Electric Utility Service Entrance Equipment			•	•	•							
Skype for Business Essentials							•		•	•		
Sliding Surface Bearings, Part 1							•					
Sliding Surface Bearings, Part 2							•					
Slips Trips and Falls (Hospitality)							•	•				
Slips, Trips, and Falls								•				
Small Scale and Micro Scale Wind Applications						•						
Smart Business Writing: 4 Stages to Writing Your Best							•		•	•		•
Smart Business Writing: How to Write Powerful & Persuasive Emails									•	•		•
Smart Business Writing: Short, Sweet and To-the-Point Reports							•		•	•		•
Smart Business Writing: Tackling the Technical Proposal							•		•	•		•
Smart Business Writing: Writing Effective Emails	•	•			•		•		•	•	•	•
Smart Customer Service 1: Courtesies, Attitude, and Ethics							•		•	•		
Smart Customer Service 2: Listening for Understanding							•		•	•		
Smart Customer Service 3: Effective Verbal and Nonverbal Communication		•					•		•	•	•	
Smart Customer Service 4: 3 Steps to Successful Customer Interaction							•		•	•		
Smart Customer Service 5: Handling Customer Complaints							•		•	•		
Smart Finances: Creating a Budget that Works for You									•	•		•
Smart Health: Best Practices to Help You Quit Smoking									•	•		•
Smart Health: Bloodborne Pathogens							•	•	•	•		
Smart Health: Child Nutrition - How to Avoid/Prevent Childhood Obesity									•	•		
Smart Health: Drinking Responsibly									•	•		•
Smart Health: Eating Right									•	•		•
Smart Health: HIPAA Privacy Standards for Everyone									•	•		•
Smart Health: Managing Your Cholesterol and Blood Pressure									•	•		•
Smart Health: Physical Fitness - Choosing an Exercise Plan That's Right for You									•	•		•
Smart Health: Proper Posture and Breathing									•	•		•
Smart Health: Sleeping - How to Ensure You Are Well-Rested & Energized									•	•		•
Smart Health: Yoga & Meditation - Finding your Inner Chi									•	•		•
SMART Instrumentation in Biological and Chemical Treatment						•	•					
Smart Leadership: Part 1 - What Leaders Do							•		•	•		
Smart Leadership: Part 2 - Model the Way							•		•	•		
Smart Leadership: Part 3 - Inspire a Shared Vision							•		•	•		
Smart Leadership: Part 4 - Challenge the Process							•		•	•		
Smart Leadership: Part 5 - Enable Others to Act							•		•	•		
Smart Leadership: Part 6 - Encourage the Heart							•		•	•		
Smart Management: Business Essentials		•					•		•	•	•	
Smart Management: Coaching for Better Performance		•					•		•	•	•	
Smart Management: Data Security		•					•		•	•	•	
Smart Management: Discrimination in the Workplace for Managers					•		•		•	•		
Smart Management: Effective Performance Review Practices							•		•	•		
Smart Management: Equal Employment Opportunity and Diversity for Managers					•		•		•	•		
Smart Management: Getting the Most out of a Multigenerational Workforce		•			•		•		•	•	•	
Smart Management: Hiring the Right Talent - Customer Service		•					•		•	•	•	
Smart Management: Hiring the Right Talent - Sales							•		•	•	•	
Smart Management: How to Handle Workplace Challenges		•					•		•	•	•	
Smart Management: Key Skills for Managing & Coaching Your Team		•					•		•	•	•	
Smart Management: Lawful Employee Discipline							•		•	•		
Smart Management: Lawful Hiring Practices					•		•		•	•		
Smart Management: Lawful Termination Practices							•		•	•		



	Architecture & Design	Construction Project Management	Construction & Trade	Cybersecurity Awareness	EIT Success	Engineering	Facilities Management & Maintenance	Health, Safety, Environment Premium	IT & Security	Professional Development	Project Management	Workplace Essentials
Smart Management: Managing a Geographically Distributed Workforce							•		•	•		
Smart Management: Methods for Motivating and Mentoring Your Team		•					•		•	•	•	
Smart Management: SMART Goals - Setting Effective Targets for Success		•					•		•	•	•	
Smart Management: Successfully Transitioning from Team Member to Manager		•					•		•	•	•	
Smart Management: The Art & Science of Delegation		•					•		•	•	•	
Smart Mental Health: Core Values and Finding a Purpose in Life									•	•		•
Smart Mental Health: Goal Setting and Visualization Techniques									•	•		•
Smart Mental Health: Happiness is a Choice - Keys to Living a Joyful Life									•	•		•
Smart Mental Health: Keys to Successful Parenting									•	•		•
Smart Mental Health: Managing Anger and Emotions									•	•		•
Smart Mental Health: Mastering Marriage									•	•		•
Smart Mental Health: Reducing Stress and Anxiety									•	•		•
Smart Mental Health: Surviving and Thriving After Divorce									•	•		•
Smart Office: Excel 2007 Essential Training	•				•				•	•		
Smart Office: Excel 2007 Essential Training II	•				•				•	•		
Smart Office: Excel 2010 Essential Training	•				•		•		•	•		
Smart Office: Excel 2010 Essential Training II	•				•		•		•	•		
Smart Office: Excel 2013 Essential Training I	•				•		•		•	•		
Smart Office: Excel 2013 Essential Training II	•				•		•		•	•		
Smart Office: Outlook 2007 Essential Training	•				•		•		•	•		
Smart Office: Outlook 2007 Essential Training II	•				•		•		•	•		
Smart Office: Outlook 2010 Essential Training	•				•		•		•	•		
Smart Office: Outlook 2010 Essential Training II	•				•		•		•	•		
Smart Office: Outlook 2013 Essential Training	•				•		•		•	•		
Smart Office: Powerpoint 2007 Essential Training	•				•		•		•	•		
Smart Office: Powerpoint 2007 Essential Training II	•				•		•		•	•		
Smart Office: Powerpoint 2010 Essential Training	•				•		•		•	•		
Smart Office: Powerpoint 2010 Essential Training II	•				•		•		•	•		
Smart Office: PowerPoint 2013 Essential Training	•				•		•		•	•		
Smart Office: Word 2007 Essential Training	•				•		•		•	•		
Smart Office: Word 2007 Essential Training II	•				•		•		•	•		
Smart Office: Word 2010 Essential Training	•				•		•		•	•		
Smart Office: Word 2010 Essential Training II	•				•		•		•	•		
Smart Office: Word 2013 Essential Training I	•				•		•		•	•		
Smart Office: Word 2013 Essential Training II	•				•		•		•	•		
Smart Quality: Building Quality Awareness							•		•	•		
Smart Quality: Process Improvement							•		•	•		
Smart Quality: Systematic Problem Solving							•		•	•		
Smart Safety: Safe Driving					•		•	•	•	•		•
Smart Sales 1: Understanding the Psychology of Sales	•				•		•		•	•		
Smart Sales 2: Identifying the Decision Maker & Setting Appointments	•				•		•		•	•		
Smart Sales 3: Securing Appointments & Advancing the Sale	•				•		•		•	•		
Smart Sales 4: Overcoming Objections & Closing the Sale	•				•		•		•	•		
Smart Sales 5: Business-to-Business Sales	•				•		•		•	•		
Smart Sales 6: The Sales Cycle	•				•		•		•	•		
Smart Sales: Advanced Tele-Prospecting - Closing the Call							•		•	•		
Smart Sales: Advanced Tele-Prospecting - Creating Opening Statements							•		•	•		
Smart Sales: Advanced Tele-Prospecting - Dealing With Dismissive Objections							•		•	•		
Smart Sales: Advanced Tele-Prospecting - Follow-up Strategies and Tactics							•		•	•		
Smart Sales: Advanced Tele-Prospecting - Getting Past Gatekeepers							•		•	•		
Smart Sales: Advanced Tele-Prospecting - Handling Smokescreen and Authentic Objections							•		•	•		
Smart Sales: Advanced Tele-Prospecting - Overview and Pre-Call Planning							•		•	•		
Smart Sales: Advanced Tele-Prospecting - Presenting an Offer							•		•	•		
Smart Sales: Advanced Tele-Prospecting - Qualification and Questioning							•		•	•		
Smart Sales: Advanced Tele-Prospecting - Using Email in the Tele-Prospecting Process							•		•	•		
Smart Time Management: 7 Steps to Regaining Control of Your Day							•		•	•		•
Smart Time Management: The 80/20 Rule for Making Every Minute Count							•		•	•		•
Smart Workplaces: Code of Conduct - Ethics Education & Social Media Guidelines	•				•		•		•	•		•
Smart Workplaces: Designing Safe Workspaces & Preventing Injury	•				•		•	•	•	•		•
Smart Workplaces: Optimizing LinkedIn for Sales Prospecting and Business Networking							•		•	•		
Smart Workplaces: Optimizing LinkedIn for Sales Prospecting and Business Networking (ST-0146)	•				•		•		•	•		
Smart Workplaces: Preparing for a Pandemic Flu Outbreak	•				•		•	•	•	•		•
Smart Workplaces: Putting Your People First - Personnel Administration							•		•	•		•
Smart Workplaces: Responsible Social Media for Team Members	•				•		•		•	•		•
Smart Workplaces: Sexual Harassment Prevention for Field Managers & Supervisors, California AB 1825 and all 50 States							•		•	•		•
Smart Workplaces: Sexual Harassment Prevention for Office Managers & Supervisors, California AB 1825 and all 50 States							•		•	•		•
Smart Workplaces: Sexual Harassment Prevention for Team Members	•				•		•		•	•		•



	Architecture & Design	Construction Project Management	Construction & Trade	Cybersecurity Awareness	EIT Success	Engineering	Facilities Management & Maintenance	Health, Safety, Environment Premium	IT & Security	Professional Development	Project Management	Workplace Essentials
Smart Workplaces: Sexual Harassment Prevention Overview for Team Members												
Smart Workplaces: Sexual Harassment Prevention Overview for Team Members (ST-0159)	•				•					•	•	•
Smart Workplaces: Understanding the Family Medical Leave Act (FMLA)										•	•	•
Smart Workplaces: Understanding the Family Medical Leave Act (FMLA) (ST-0158)	•				•							
Smart Workplaces: Webinars - Conducting a Web-based Presentation										•	•	
Smart Workplaces: Webinars - Conducting a Web-based Presentation (ST-0145)					•							
Soils and Foundations: The Low Down on Dirt	•		•			•						
Solar Panels for Home Inspectors			•									
Sources of Electricity, Part 1							•					
Space Planning: Design Fundamentals	•											
Space Planning: Design Methodology	•											
Space Planning: Furniture and Furnishings	•											
Space Planning: History and Overview	•											
Space Planning: Security Issues	•											
SPCC Inspections								•				
SPCC Run-On and Runoff								•				
SPCC Secondary Containment								•				
Spill Prevention Control and Countermeasure (SPCC) Plans								•				
Spill Prevention, Control, and Countermeasures								•				
Spray Polyurethane Foam Air Barriers						•						
SQL Server (70-464): 01-Introduction to SQL Server Toolset & Services									•			
SQL Server (70-464): 02-Working with Data Types									•			
SQL Server (70-464): 03-Designing and Implementing Tables									•			
SQL Server (70-464): 04-Ensuring Data Integrity through Constraints									•			
SQL Server (70-464): 05-Designing and Implementing Views									•			
SQL Server (70-464): 06-Introduction to Indexing									•			
SQL Server (70-464): 07-Advanced Indexing									•			
SQL Server (70-464): 08-Reading SQL Server Execution Plans									•			
SQL Server (70-464): 09-Designing and Implementing Stored Procedures									•			
SQL Server (70-464): 10-Designing and Implementing User-Defined Functions									•			
SQL Server (70-464): 11-Data Manipulation via Triggers									•			
SQL Server (70-464): 12-Implementing Managed Code in SQL Server									•			
SQL Server (70-464): 13-Creating Highly Concurrent SQL Server Applications									•			
SQL Server (70-464): 14-Handling Errors in T-SQL Code									•			
SQL Server (70-464): 15-Storing and Querying XML Data in SQL Server									•			
SQL Server (70-464): 16-Working with SQL Server Spatial Data									•			
SQL Server (70-464): Test Me-Microsoft Exam (70-464)									•			
SQL Server (70-465): 01-Designing a Database Server Infrastructure									•			
SQL Server (70-465): 02-Designing a Logical Database Schema									•			
SQL Server (70-465): 03-Designing a Physical Database Implementation									•			
SQL Server (70-465): 04-Tuning Database Performance									•			
SQL Server (70-465): 05-Designing Database Security									•			
SQL Server (70-465): 06-Policy Based Management									•			
SQL Server (70-465): 07-Monitoring Server Health									•			
SQL Server (70-465): 08-Managing SQL Server with PowerShell									•			
SQL Server (70-465): 09-Replicating Data									•			
SQL Server (70-465): 10-Planning High Availability and Disaster Recovery									•			
SQL Server (70-465): 11-Clustering with Windows Server and SQL Server									•			
SQL Server (70-465): 12-AlwaysOn Availability Groups									•			
SQL Server (70-465): 13-Consolidating Database Workloads with SQL Server									•			
SQL Server (70-465): 14-Introduction to Cloud Data Solutions									•			
SQL Server (70-465): 15-Windows Azure SQL Database									•			
SQL Server (70-465): 16-Introduction to Windows Azure									•			
SQL Server (70-465): 17-SQL Server in Windows Azure Virtual Machines									•			
SQL Server (70-465): Test Me-Microsoft Exam (70-465)									•			
Statistical Analysis					•	•						
Staying Current - Energy Codes and Sustainability Trends	•				•	•	•					
Steam & Condensate Systems I						•	•					
Steam & Condensate Systems II			•			•	•					
Steam Cycle Analysis Using Feed Water Heaters						•						
Steam Pipe Safety								•				
Steam System Basics & Performance Improvements						•						
Steam Turbine Power						•						
Steel Erection Safety								•				
Stefanic et al - A Dave Gibson Metes and Bounds Case						•						
Stop When Unsure										•		
Storage and Handling of Combustibles								•				



	Architecture & Design	Construction Project Management	Construction & Trade	Cybersecurity Awareness	EIT Success	Engineering	Facilities Management & Maintenance	Health, Safety, Environment Premium	IT & Security	Professional Development	Project Management	Workplace Essentials
Storage and Handling of Corrosives								•				
Storage and Handling of Flammables								•				
Storage and Handling of Pesticides								•				
Storm Safe Homes: Building a Safe Room	•											
Storm Water Management: Storm Water Pollution Prevention Plan (SWPPP)		•		•	•	•	•					
Storm Water Treatment Using StormFilter Cartridges						•						
Stormwater Discharges from Construction Activities				•	•							
Stormwater Harvesting: A Green Concept	•	•		•	•							
Stormwater Management: An Introduction	•			•	•							
Stormwater Management: Low Impact Development (LID)	•	•		•	•							
Stormwater Pollution Prevention								•				
Strategic Brand Management									•			
Strategies for Implementing NFPA 70E®	•	•		•	•	•	•					
Stream Restoration 1 - Introduction and Overview			•			•						
Stream Restoration 2 - Stream Corridor Processes			•			•						
Stream Restoration 3 - Disturbances Affecting Stream Corridors			•			•						
Stream Restoration 4 - Identifying Problems and Opportunities			•			•						
Stream Restoration 5 - Goals and Objectives			•			•						
Stream Restoration 6 - Implementation and Monitoring			•			•						
Stress & Change Management for Design and Construction Professionals										•		
Stress Management and Prevention										•		
Structural Design Philosophies ASD & LRFD	•					•						
Structural Guying for Electric Distribution Systems		•				•						
Structural Insulated Panels (SIPs)	•	•				•						
Structural Steel - An Introduction		•		•	•							
Stucco in Home Building for Home Inspectors		•										
Substance Abuse Awareness										•		
Subsurface Utility Engineering - Part 1: Understanding SUE						•						
Subsurface Utility Engineering - Part 2: Understanding CI/ASCE 38-02						•						
Successful Hiring		•							•	•	•	•
Successful Negotiation		•							•	•	•	•
Successful Termination		•							•	•	•	•
Superpave Mix Design Process and Analysis						•						
Supported Scaffold Safety								•				
Supporting Change: 01-The 3 Phases of Change									•			
Supporting Change: 02-Reactions to Change									•			
Supporting Change: 03-Your Path to Supporting Change									•			
Supporting Change: 04-Mastering Supporting Change									•			
Supporting Change: 05-Supporting Change Health Check									•			
Surge Protection		•				•						
Surveying Essentials				•	•							
Suspensión de cargas: Escaleras y andamios (Rigging: Ladders and Scaffolds)							•	•				
Suspensión de cargas: Levantamiento básico (Rigging: Basic Survey)							•	•				
Sustainability and Vehicle Maintenance Lifts						•						
Sustainable Building Technology	•	•		•	•	•						
Sustainable Design: Eco-efficiency of Roofing Insulation Systems	•	•				•						
Sustainable Sites Initiative and the SITES® Rating System	•	•				•						
Sustainable Solutions: Air Pollution	•	•				•						
Sustainable Solutions: Human Health and Well-Being	•	•				•						
Sustainable Solutions: Invasive Species	•	•				•						
Sustainable Solutions: Loss of Biodiversity	•	•				•						
Sustainable Solutions: Urban Flooding and Water Pollution	•	•				•						
Sustainable Solutions: Water Shortages	•	•				•						
Sustainable Urban Design: High Speed Rail	•	•				•						
Swift Language Fundamentals									•			
Swimming Pools: Coordination of Architects & Pool Design Professionals	•	•				•						
Swimming Pools: Coordination of Contractors	•	•				•						
Swimming Pools: Coordination of Contractors & Building Trade Professionals	•	•				•						
Swimming Pools: Coordination of Engineers & Pool Design Professionals	•	•				•						
Swimming Pools: Introduction to Aquatic Design & Construction		•				•						
Swimming Pools: Mechanical and Hydraulic System Design		•				•						
Synchronous Motor and Controller Maintenance							•					
Tactical Time Management: An Advanced Course		•								•		
Tanker Rollover								•				
TDLR TEST Basic Electricity I				•	•							
Texas Land Surveyors: Texas Administrative Code Rules, Title 22, Part 29						•						
The Art of Negotiation									•			



	Architecture & Design	Construction Project Management	Construction & Trade	Cybersecurity Awareness	EIT Success	Engineering	Facilities Management & Maintenance	Health, Safety, Environment Premium	IT & Security	Professional Development	Project Management	Workplace Essentials
The Change Process		•							•	•	•	
The Hazards of Oxygen and Oxygen Enrichment								•				
The Importance of the International Building Code (IBC) in the Design and Construction of Safe Buildings	•		•			•						
The Petroleum Industry - Crude Oil Classification and Benchmarks			•			•						
The Petroleum Industry - Exploration, Recovery, and Transportation			•			•						
The Petroleum Industry - History, Terminology, and Culture			•			•						
The Petroleum Industry - Oil Supply			•			•						
The Petroleum Industry - Origins and Occurrence of Oil			•			•						
The Petroleum Industry - The Crude Oil Market			•			•						
The Petroleum Industry - The Future			•			•						
The Power of One-Taking Accountability to Get Results									•			
The Power of Vision									•			
The Principles and Implications of the International Energy Conservation Code (IECC) v2012	•	•			•	•	•					
The Safe Lab Environment							•					
The Safe Operation of Utility Carts							•	•				
The Science of Mold			•				•					
The Sustainable Site Design Process	•				•							
The Top Five Things You Need to Know About The Flu							•	•				
The Ultimate Project Manager, Chapter 01: Today's Project Manager	•	•			•	•	•					
The Ultimate Project Manager, Chapter 02: Marketing And Proposals	•	•			•	•	•					
The Ultimate Project Manager, Chapter 03: The Contract Agreement	•	•			•	•	•					
The Ultimate Project Manager, Chapter 04: The Project Management Plan	•	•			•	•	•					
The Ultimate Project Manager, Chapter 05: The Project Schedule	•	•			•	•	•					
The Ultimate Project Manager, Chapter 06: The Project Budget	•	•			•	•	•					
The Ultimate Project Manager, Chapter 07: Leading The Project Team	•	•			•	•	•					
The Ultimate Project Manager, Chapter 08: Managing Client Relationships	•	•			•	•	•					
The Ultimate Project Manager, Chapter 09: Developing Effective Communications	•	•			•	•	•					
The Ultimate Project Manager, Chapter 10: The Project Startup	•	•			•	•	•					
The Ultimate Project Manager, Chapter 11: Managing Your Time	•	•			•	•	•					
The Ultimate Project Manager, Chapter 12: Managing Project Studies And Reports	•	•			•	•	•					
The Ultimate Project Manager, Chapter 13: Managing Design And Construction Phases	•	•			•	•	•					
The Ultimate Project Manager, Chapter 14: Managing Project Quality	•	•			•	•	•					
The Ultimate Project Manager, Chapter 15: Managing Project Risks	•	•			•	•	•					
The Ultimate Project Manager, Chapter 16: Project Financial Management	•	•			•	•	•					
The Ultimate Project Manager, Chapter 17: Project Management And Design Technology	•	•			•	•	•					
The Ultimate Project Manager, Chapter 18: Monitoring And Controlling The Project	•	•			•	•	•					
The Ultimate Project Manager, Chapter 19: Project Closeout	•	•			•	•	•					
The Ultimate Project Manager, Chapter 20: Alternative Project Delivery Methods	•	•			•	•	•					
The Ultimate Project Manager, Chapter 21: A/E Project Management Benchmark Data	•	•			•	•	•					
The Ultimate Project Manager, Series Summary: The Short and Sweet Version	•	•			•	•	•					
The Value of Concentrating Solar Power and Thermal Energy Storage					•	•						
The WELL Building Standard			•			•	•					
Thermodynamics I: An Introduction					•	•						
Three-Phase AC Induction Motor Maintenance							•					
Tidal Hydraulics						•						
Timber Bridge Design	•					•						
Tort Liability & Risk Management - Bicycle and Pedestrian Design	•											
Toxic Mold Detection, Prevention, & Remediation							•					
Toxic Mold: Managing the Legal & Insurance Risks							•	•				
Traffic Control Measures					•	•						
Transformer Maintenance							•					
Transformers							•					
Transformers I - Electrical Characteristics			•		•	•						
Transformers II - Standards			•		•	•						
Transformers III - Connections			•		•	•						
Transformers, Breakers, and Switches							•					
Transition to Leadership									•			
Transit-Oriented Development	•											
Transmission and Distribution: Distribution Line Installation and Removal						•	•					
Transmission and Distribution: Distribution Line Replacement						•	•					
Transmission and Distribution: Focus on Distribution						•	•					
Transmission and Distribution: Introduction to Transmission and Distribution Systems						•	•					
Transmission and Distribution: Overhead Distribution Systems						•	•					
Transmission and Distribution: Service Installation							•					
Transmission and Distribution: Substations and Switchyards							•					
Transmission and Distribution: Underground Residential Distribution Systems							•					
Transmission and Distribution: Working on Distribution Poles							•					





	Architecture & Design	Construction Project Management	Construction & Trade	Cybersecurity Awareness	EIT Success	Engineering	Facilities Management & Maintenance	Health, Safety, Environment Premium	IT & Security	Professional Development	Project Management	Workplace Essentials
Transportation Engineering: Geometric Design of Highways	•		•		•	•						
Transportation Engineering: Highway Capacity	•		•		•	•						
Transportation Engineering: Introduction to Transportation, Planning, and Funding	•		•		•	•						
Transportation Engineering: Mass Transportation	•		•		•	•						
Transportation Engineering: Road Vehicle Dynamics	•		•		•	•						
Transporting Hazardous Materials								•				
Tree Trimming Safety							•	•				
Trenching and Excavation Safety								•				
Trenching and Excavation Soil Properties								•				
Trenchless Methods: An Introduction						•						
Triethylaluminum Safety Awareness								•				
Troubleshooting Systems and Circuits							•					
Truck Mounted Cranes								•				
Tuberculosis in the Healthcare Environment							•	•				
Turnover										•		
Turpentine Awareness								•				
U.S. Biofuel Industry: Mind the Gap						•						
Underground Storage Tank Requirements (UST)								•				
Understanding Business Ethics		•							•	•	•	•
Understanding Concrete's Environmental Advantage	•		•		•	•						
Understanding Construction Claims					•							
Understanding Fire Sprinkler Drawings and Calculations	•		•			•	•					
Understanding Forklifts								•				
Understanding HIPAA									•	•		•
Understanding Moisture Intrusion and Its Impact on Mold Growth			•				•					
Understanding the Energy Independence and Security Act	•		•		•	•						
Understanding Workers' Compensation for Employees (V15)									•	•		•
Understanding Workers' Compensation for Employers V14										•		•
Uninterruptible Power Supply (UPS) System Efficiency			•		•	•	•					
Universal Housekeeping Safety Training for Hospitality							•	•				
Universal Waste Storage and Handling								•				
Unreinforced Masonry Design	•					•						
Unstable, Reactive, and Energetic Compounds								•				
UPS Battery Monitoring	•		•		•	•	•					
Urban Cohousing: Neighborhood of the Future	•											
Urban Drainage – Design of Storm Water Detention and Retention Facilities						•						
Urban Sprawl Laws	•		•			•						
Use of Ohm's and Kirchhoff's Laws in DC Circuits							•					
Use of Steel in Design & Construction	•					•						
Using Electrical Test Equipment							•					
Valet Safety Essentials							•	•				
Valves: Basic Types and Operation, Part 1							•					
Valves: Basic Types and Operation, Part 2							•					
Valves: Electric and Hydraulic Actuators							•					
Valves: Introduction to Actuators							•					
Variable Speed Drives: Common Applications							•					
Variable Speed Drives: Controllers and Troubleshooting, Part 1							•					
Variable Speed Drives: Controllers and Troubleshooting, Part 2							•					
Variable Speed Drives: Installation							•					
Variable Speed Drives: Introduction to VSDs							•					
Variable Speed Drives: Programming AC Controllers							•					
Variable Speed Drives: Programming DC Controllers							•					
Variable Speed Drives: System Troubleshooting, Part 1							•					
Variable Speed Drives: System Troubleshooting, Part 2							•					
Variable Speed Drives: Systems and Integration							•					
Vibration Analysis: Introduction							•					
Vinyl Chloride: Safe Handling & Storage								•				
Violence in the Workplace										•		
Volatile Solvent Spill Response								•				
Voltage and Current Principles							•					
Walkable Communities	•		•			•						
Walking and Working Surfaces							•	•				
Warehouse and Loading Dock Safety								•				
Warning Signs and Labels							•	•				
Waste Treatment Systems			•		•	•	•					
Wastewater Treatment and Reclamation: Asset or Liability			•		•	•	•					
Wastewater: Land Treatment Systems					•	•						



	Architecture & Design	Construction Project Management	Construction & Trade	Cybersecurity Awareness	EIT Success	Engineering	Facilities Management & Maintenance	Health, Safety, Environment Premium	IT & Security	Professional Development	Project Management	Workplace Essentials
Water Industry Hydraulics					•	•						
Water Measurement - Weirs						•						
Water Well Design						•						
Water-Based Fire Suppression Systems						•	•					
Welding Safety								•				
Welding: Arc Welding							•					
Welding: Oxy-Fuel Gas Welding							•					
Wetland Delineation 1: The Basics						•						
Wetland Delineation 2: Methodology						•						
What's New in Office 2016?							•		•	•		
Wind Design Using ASCE 7-10	•	•		•	•							
Wind Design Using ASCE 7-16	•					•	•					
Wind Mitigation Methodology: Retrofits for Existing Homes	•	•				•						
Wind Mitigation: Roof Decking, Secondary Water Barriers & Gable End Bracing	•	•				•						
Windows 10 Essentials							•		•			
Windows 8.1 Essentials							•		•	•		
Winning Proposals 1: Preliminary Steps & Planning Strategies	•	•		•						•		
Winning Proposals 2: Effective Design & Development	•	•		•						•		
Winning Proposals 3: Components of a Successful Proposal	•	•		•						•		
Winning Proposals 4 & 5: Final Considerations & Evaluations		•		•						•		
Wire Rope Basics								•				
Wire Rope Safety and Operation								•				
Wood Design Using the 2012 Wood Frame Construction Manual	•	•				•						
Work Life Balance								•				
Work Practices of the Mold Remediation Contractor			•									
Work Zone Safety								•				
Work Zone Safety and Traffic Control				•				•				
Worker Right to Know (RTK)								•				
Working Effectively with Building Officials and Inspectors										•		
Working Over or Near Water								•				
Workplace Ergonomics							•	•				
Workplace Hazardous Materials Information System (WHMIS)								•				
Workplace Violence: Facts & Prevention for Hospitality							•	•				
Worksite Safety 01: OSHA Safety Introduction	•			•		•	•	•				
Worksite Safety 02: OSHA Electrical Safety	•			•		•	•	•				
Worksite Safety 03: OSHA Fall Protection	•			•		•	•	•				
Worksite Safety 04: OSHA Struck-By & Caught-Between Accidents	•			•		•	•	•				
Worksite Safety 05: OSHA Personal Protective Equipment	•			•		•	•	•				
Worksite Safety 06: OSHA Scaffolds	•			•		•	•	•				
Worksite Safety 07: OSHA Cranes & Other Hoists	•			•		•	•	•				
Worksite Safety 08: OSHA Power Tools and Excavations	•			•		•	•	•				
Worksite Safety 09: OSHA Materials Storage	•			•		•	•	•				
Worksite Safety 10: OSHA Demolition	•			•		•	•	•				
Worksite Safety 11: OSHA Hazards in Communication	•			•		•	•	•				
WSI - Groundskeeping Safety							•	•				
XenApp 6.5: Build Web Access and Create Policies in Citrix XenApp 6.5									•			
XenApp 6.5: Publish Applications and Configure Content in Citrix XenApp 6.5									•			
XenApp 6.5: Publish Performance and Stream Applications in Citrix XenApp 6.5									•			
XenApp 6.5: Secure and Troubleshoot in Citrix XenApp 6.5									•			
XenApp 6.5: Secure Policies and Administer Performance in Citrix XenApp 6.5									•			

## INSTRUCTIONAL DESIGN

RedVector's dedicated team of instructional designers work to create engaging, focused training that emphasizes the use of real-world video, interactive learning techniques and comprehensive tracking to ensure active employee participation and retention.

### Courses Include:

- Real-world situations
- Interactive approach
- Comprehensive evaluations and progress tracking

### Highlights Include:

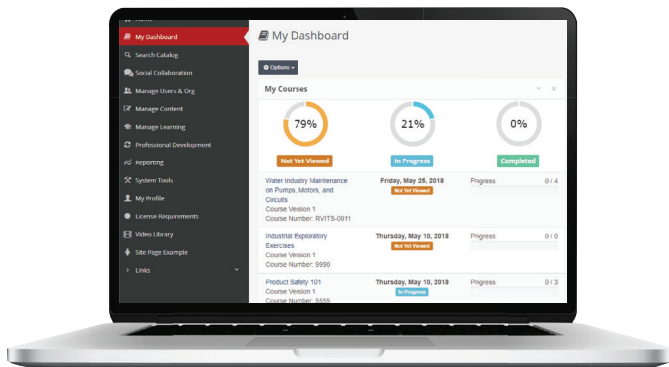
- Course introduction
- High-resolution 3D models and studio-quality motion graphics
- Stated learning objectives
- Learning Aids - Including a main menu with a course outline and glossary of terms
- Interactive Course Modules – In-depth content, using any combination of demonstrative examples, integrated video, review activities, practice questions and rolling audio transcription
- Tests/Exams - To validate learning and the level of achieved skill knowledge after training



## LEARNING MANAGEMENT SYSTEM

### Assess, Manage and Develop Learning and Talent

We'll put you on a path to develop and retain talent and improve performance with powerful tools and features. Start by assessing knowledge and skills. Then, deliver targeted, engaging training. Finally, manage/report that training with flexibility and ease.



**JOURNEY**

### Assess

- Self Assessments
- Competency Assessments
- Badging
- Task Verification

### Manage/Report

- Credential Management
- Tracking & Reporting on Learning Goals
- Schedule & Manage Instructor-Led Training
- Create User Groups and Attributes

### Develop

- Custom Credential Creation
- Custom Course Builder
- Social Collaboration Forums
- Multilingual Interface

## INNOVATIVE TECHNOLOGY SOLUTIONS

### Competency Assessments

RedVector competency assessments identify the skills gaps between your employees' existing knowledge, skills and abilities vs. their development goals. Use this tool to identify employee skills deficiencies and automatically prescribe necessary training.

### Incident Tracking

Our cloud-based Incident Tracking allows you to generate more timely, accurate incident reports, and to take a more proactive approach to managing risk by identifying areas prone to accidents.



### Mobile Apps

- Whether on the job site or plant floor, users can access bite-sized training clips at the point of need via RedVector GO.
- Other mobile learning apps including "Learn", "Credit" and "Search" are built to help you manage training more effectively and efficiently.



[www.RedVector.com](http://www.RedVector.com)

4890 West Kennedy Blvd.,  
Suite 300 Tampa, FL 33609